

VISIT *Polk County* FREE

NORTHWEST WISCONSIN 2020 VISITOR GUIDE

DISCOVER • EXPLORE • ENJOY

800.222.7655 • www.polkcountytourism.com



Visit **Turtle Lake**

DISCOVER the history, **DISCOVER** the fun!



Add to Your "To Do" List!

Turtle Lake, Wisconsin continues to be a destination for both relocation, travel, and those looking for a friendly, small town atmosphere. Ride your ATV on the old railroad bed that once carried lumber to market and fed the local economy. Seat yourself at the old Hotel Bar & Grill where conversations of historic proportions are still boasted from within the brick walls. From the lakes and woodlands to the busy nightlife, a visit to Turtle Lake is always bucket-list worthy.

For more information:
www.turtlelakewi.com



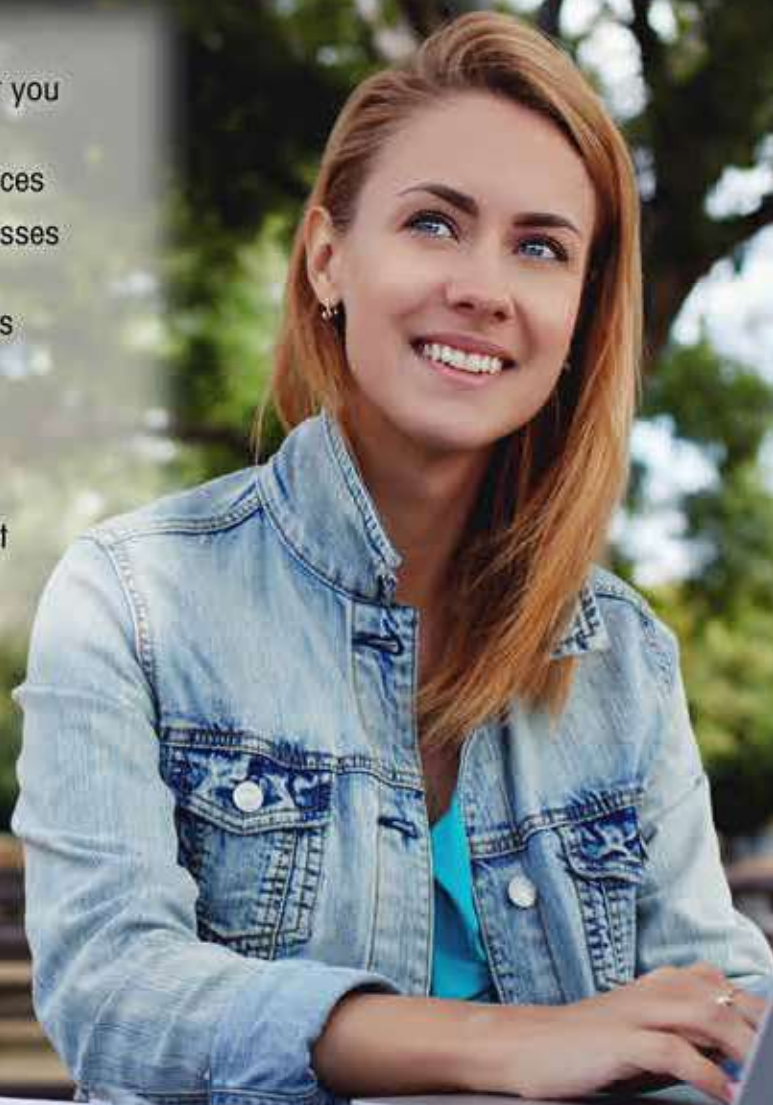
POLK COUNTY
ECONOMIC
DEVELOPMENT
CORPORATION

Live, Work & Play in Polk County

100 Polk Plaza, Suite 226, Balsam Lake, WI 54810
Phone: 715-405-3400 • Email: director@polkcountyedc.com
www.polkcountyedc.com

- Economic development staff to assist you with business expansion & siting
- Education to improve business practices
- Regional connections to other businesses to market your products & services
- Information on financing opportunities
- Connections to low-interest loans
- Information on training available to improve your business practices
- Information to help you if you are just starting a business

Your "one-stop" for
business information
& assistance



Experience More in Polk County!



Welcome to Wisconsin & Polk County



The beauty of Northwest Wisconsin is on full display in Polk County with its vast waterways, scenic countryside, and charming communities. The area is truly a "gift of the glaciers" – home to over 400 lakes, the St. Croix National Scenic Riverway, two state parks, and the western trailhead of the Ice Age National Scenic Trail.

Visitors of all ages will find an adventure waiting for them in Polk County. Outdoor recreation opportunities include camping, kayaking, ice fishing, and golfing. Explore the area year-round with hundreds of miles of winding trails for hiking, biking, snowmobiling, and cross-country skiing. Enjoy arts and culture by visiting our theater, historical museums, wineries, or a dinner cruise on the St. Croix River. Create unique memories on your Polk County trip by visiting our animal wildlife preserve, horseback riding, or ziplining!

Include a stop at the Polk County Information Center to let their friendly and helpful staff guide you through your visit to the area. More resources and travel information are also available at TravelWisconsin.com.

On behalf of Wisconsin's tourism industry, welcome to beautiful Polk County! We hope you enjoy your stay and experience all the fun the area has to offer.

Sincerely,

Sara Meaney
Secretary-designee

Wisconsin Department of Tourism



Promoting Polk County for 26 Years!

Polk County Information Center



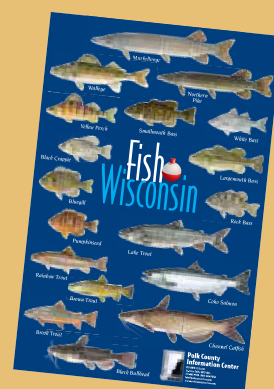
710 Hwy. 35 South, St. Croix Falls, WI 54024

715-483-1410 • 800-222-POLK

info@PolkCtyTourism.com

PolkCountyTourism.com

Get a FREE
Wisconsin Fish Poster
when you bring
this coupon to the
Polk County
Visitor Center!



WELCOME

Find what you need *in Polk County*

Polk County Recreation Viewer

This online interactive map application allows users to discover where public & private recreational amenities are located in Polk County along with associated information, maps & images.

<http://www2.co.polk.wi.us/recreationviewer/>

Area Map	pg. 3
Area Parks	pg. 20
Arts & Theater	pp. 22-23
ATV/UTVing	pg. 15
Calendar of Events	pp. 9-11
Communities	pp. 12-13
Four Seasons of Fun in Polk	pg. 14
Gandy Dancer State Trail	pg. 19
Rivers & Lakes	pg. 21
Snowmobile Trails Map	pg. 16
Snowmobiling	pg. 17
Trails	pg. 18

ADVERTISERS:

Amery	pp. 31-35
Balsam Lake	pp. 24-28
Centuria	pp. 29-30
Clayton	pp. 36-39
Clear Lake	pp. 40-43
Cushing	pg. 44
Dresser	pg. 45
Frederic	pp. 46-49
Luck	pp. 50-53
Milltown	pg. 54
Osceola	pp. 55-57
St. Croix Falls	pp. 58-61
Turtle Lake	pp. 62-65
Regional Businesses	pg. 67

FEATURED DIRECTORIES:

Lodging Guide	pp. 4-5
Dining Guide	pp. 6-8
Antique Shops	pg. 66
Business Directory	pg. 68

This publication was marketed and published by 5 Star Marketing & Distribution 715-453-4511, for and under the direction of the Polk County Tourism Council. All rights reserved by 5 Star Marketing & Distribution for Polk County Tourism Council.

Cover Photo: © 2015 Jared Berry

Interfaith Caregivers

Helping seniors and adults with disabilities



715-825-9500

PO Box 65, Milltown, WI 54858

www.interfaithpolk.org

Need Help? Volunteer? Donate!

Volunteers providing rides, visits, chores and more at no charge in Polk County

A photograph of a person in a yellow kayak on a calm lake. The person is wearing a light-colored swimsuit and is paddling. The background features a steep, rocky shoreline covered with dense green trees and vegetation. The water is dark and reflects the surrounding environment. There are orange decorative elements in the corners of the image.



Polk County Lodging Guide

Bed & Breakfast

Canyon Road Inn Bed & Breakfast

575 W Town Line Rd
Turtle Lake, WI 54889
(715) 986-2121

<http://www.canyonroadinn.com/>



Each of our suites feature a king size bed, private bathroom, double whirlpool tub or clawfoot tub, a fireplace, and private patio or deck overlooking the lake or woods.

Inn on the St. Croix River

305 River St
Osceola, WI 54020
715-417-3556

<https://www.autumnhouseinn.com/>

A casual, personal, and comfortable bed & breakfast featuring dramatic views of St. Croix River, incredible three-course breakfast delivered to your room, and simple surroundings. Located in the heart of Polk County, less than one hour from the Twin Cities.

Pleasant Lake Bed & Breakfast

2238 60th Ave
Osceola, WI 54200
715-294-2545



www.pleasantlake.com/

Pleasant Lake Bed & Breakfast is nestled in wooded surroundings with a quiet, peaceful lake as its backdrop.

Hotels/Motels

Camelot Motel

359 Keller Ave S
Amery, WI 54001
715-268-8194

Motel unit with 17 rooms. Cable/movies and high-speed internet.

Luck Country Inn

10 Robertson Rd
Luck, WI 54853
715-472-2000

www.luckcountryinn.com/



Comfortable rooms, heated indoor pool, Jacuzzi suite, just an hour from the Twin Cities.

River Valley Inn & Suites

1030 N Cascade St
Osceola, WI 54020
715-294-4060

<http://www.osceolarivervalleyinn.com/>

Included in your stay are HBO, free high-speed wireless internet, complimentary breakfast, an indoor pool, and hot tub.

Resorts

Dream Catcher Inn

109 Indianhead Shores Dr
Balsam Lake, WI 54810
612-710-1909

www.dreamcatcher-inn.com/

Our rental properties are cozy yet luxurious with beautiful lakeside views of Balsam Lake, a fully equipped kitchen, and plenty of modern amenities.

Ward's Balsam Beach Resort

700 State Rd 46 N
Balsam Lake, WI 54810
715-485-3271

www.balsamlakesort.com/



Families from all over have made memories at this cozy resort, returning year after year.

For a complete listing,
contact the Polk County
Information Center.



Go ahead, sleep in...

PLAY HERE

- 36 Clean, Comfortable Rooms
- Rosemoon/Executive Suites
- Indoor Pool, Whirlpool & Sauna
- Fishing Cleaning Facility & Storage
- Private Rooms

Luck Country Inn

In The Middle of a Four-Season Playground

1-800-544-7396 • www.luckcountryinn.com
 Jct. St. Roads 35 & 48 • Luck, WI 53853
 715-472-2000 Motel

- Golf Courses
- Snowmobile
- Year-Round Fishing
- Shopping
- Cross-Country Skiing
- Downhill Skiing
- Attached Family Restaurant Opens Daily At 8 AM

STAY HERE

Pleasant Lake B&B
Relax - Rest - Rejuvenate

2238 60th Ave • Osceola, WI 54020
715-294-2545
www.pleasantlake.com

Camelot Motel

**359 Keller Avenue S.
 Amery, WI 54001**

Wi-Fi • Military Discounts

**Laundromat &
 Restaurants Close By**

**Snowmobilers & ATV'ers
 Welcome. On Cattail Trail**

715-268-8194
(Reservations Only)
800-899-7014

We've got you covered!

Go ahead. Sleep in. That's the joy of being on vacation and Polk County's lodging facilities have you covered! Tuck yourself in a comfortable bed after a long day of exploring the many attractions, trails, museums, and other pursuits found here.

Our lodging facilities range from national chains to locally owned, including motels and hotels, cabins, resorts, cottages, retreats, and bed and breakfasts. Most have Wi-Fi available to keep you connected whenever necessary. A Jacuzzi and indoor pool are bonuses at some.

For those on business travel, some facilities offer expanded meeting rooms and amenities to make your sessions productive and satisfying for all.

Or maybe you are more of the outdoorsy type who likes to camp out under the brilliant stars with the kids toasting marshmallows over a blazing campfire. There are public and private campgrounds with amenities serving various lifestyles, from luxurious RVs to pup tents.

Now that you've planned the perfect trip, let us help you find the perfect pillow. Check this guide for listings for your home away from home.

RIVER VALLEY

Inn & Suites

1030 N Cascade St. Osceola, WI 54020
715-294-4060 • 888-791-0022

www.osceolarivervalleyinn.com • info@osceolarivervalleyinn.com

Ward's Balsam Beach Resort

Cabins • Camping
 Swimming • Volleyball
 Playground • Kayaks
 Winter Rental

Yours Hosts: Kyle & Dawn Ward
 Balsam Lake, WI 54810
 E-mail: dawn@balsamlakeresort.com

Follow us on [facebook](#)

715-485-3271 • www.balsamlakeresort.com

Dream Catcher Inn

Waterfront Vacation Rentals on Balsam Lake

109 Indianhead Shores Dr, Balsam Lake, WI 54810
 612-710-1909
Dreamcatcher-Inn.com

BIRCH STREET BAR



Open Mon-Fri:
7am-close
Sat & Sun:
9am-close

Amery, WI 


Welcome FISHERMEN, ATV's & SNOWMOBILES. On Cattail Trail.


Sandwiches
Pool Tables, Dart Board, Games & FUN!
Banquet Center - Private Parties & Weddings
715-268-8922
117 Birch Street East Amery, WI • 54001

TAC-TWO
SPORTS BAR AND GRILL

GREAT FOOD & 15 DRAFT & CRAFT BEERS

Welcome Fishermen, Snowmobiles & ATV's. On Cattail Trail!
Open Daily 11am-close, 7days/week



DOWNTOWN AMERY
105 KELLER AVE. N • AMERY, WI 54001
www.tactwobarandgrill.com
715-268-8222 



Daily Specials Monday-Friday
Dine In or Take Out
Specializing in Homemade Pizzas
Complete Menu - Including
Italian & American Entrees
Now Serving Cocktails
Sunday Breakfast Buffet

Friendly Service in a Family Atmosphere!

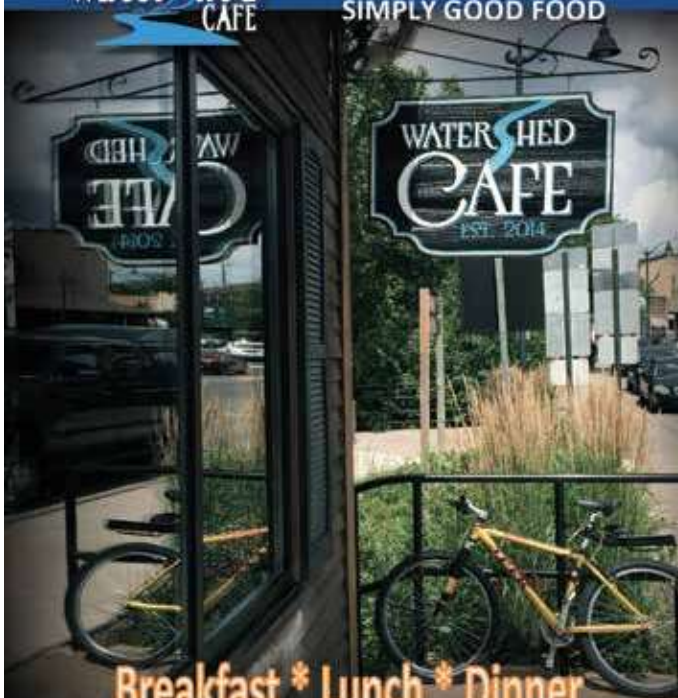
Please make reservations in advance for large parties.

Amery, WI - (715) 268-7010



WaterShed CAFE

SUSTAINABLY SOURCED,
SIMPLY GOOD FOOD



Breakfast * Lunch * Dinner


99 N. Cascade St. Osceola, WI | www.thewatershedcafe.com

*For a complete listing, contact the Polk County Information Center.

Dining

Restaurants & Cafés

Balsam Lake Café

403 Main St
Balsam Lake, WI 54810
715-557-2120
<https://www.facebook.com/balsamlakecafe/> 
Open 7 days a week. Food is locally sourced and made fresh whenever possible. Drive through coffee. On Main Street across from the water tower.

Café Wren

2596 State Hwy 35
Luck, WI 54853
715-472-4700
<http://www.thecafewren.com/> 
We serve a wonderfully simple and thoughtful lunch menu and our bakery is made in house, fresh daily. We hand craft quality coffee drinks and our ingredient sourcing is impeccable.

Julia's Java

201 Main St W
Milltown, WI 54858
715-825-5282
<http://julasjava.net/> 
Julia's Java serves gourmet coffees, fresh bakery items, and made-to-order sandwiches. Stop by today. Two drive-through windows, indoor seating, and free Wi-Fi.

KJ's New North

104 1st Ave E
Balsam Lake, WI 54810
715-614-1569
<https://www.facebook.com/kjsnewnorth/> 
KJ's New North serves up 22 delicious varieties of ice cream flavors from Ashby's and Bridgeman's. We create gourmet sandwiches and offer catering for private events.

Guide

New Frontier Restaurant

440 US Hwy 8/63
Turtle Lake, WI 54889
715-986-4797
<https://www.facebook.com/NewFrontier-Restaurant/>
Home cooking, daily specials, lots of home-made soups and desserts

Paradise Landing

264 County Rd I
Balsam Lake, WI 54810
715-485-3210
<https://www.paradiselandingwi.com/>
Our expansive menu features freshly prepared soups, salads, sandwiches, burgers, appetizers, steaks, chops, seafood, and pasta in addition to our selection of signature cocktails and extensive wine list.

Red Maple Eatery

12 N Robertson Rd
Luck, WI 54853
715-472-8987
<https://redmapleeatery.com/>
We care about the food that we serve – it may take a bit of time, but we believe that it is worth the wait. Real food takes time & we are excited to have you spend that time with us.

The Watershed Café

99 N Cascade St
Osceola, WI 54020
715-294-2638
<http://www.thewatershedcafe.com/>
You will taste simple comfort food intentionally prepared with fresh, locally sourced ingredients. This farm-to-table restaurant offers a warm, friendly atmosphere.

Village Pizzeria

325 Keller Ave N
Amery, WI 54001
715-268-7010
<http://www.thevillagepizzeria.net/>
Established in 1981 as strictly a pizza restaurant, the Pizzeria now boasts a full menu that offers tantalizing Italian cuisine, steaks, salads, sandwiches, and burgers.

Wolter's Shoreview Supper Club

796 100th St
Amery, WI 54001
715-268-8774
<http://shoreviewsupperclub.com/>
We invite you to join us for dinner & drinks on the shores of Pike Lake. Guests can enjoy dining on our large deck and take in the sights & sounds of Amery's Pike Lake.



AMERY ALE WORKS
— BREWERY WISCONSIN —
Fall/Winter: Open Thurs-Sat
Summer: Open Thurs-Sun
588 115TH STREET - AMERY, WI 54001
AMERYALEWORKS@GMAIL.COM
(715) 268-5226
WWW.AMERYALEWORKS.COM



BARREL HOUSE
Frederic, WI
715-327-4626
DINING HOURS: *Serving Breakfast*
Mon-Thurs: 11am-9pm
Friday: 11am-10pm
Saturday: 8am-10pm
Sunday: 8am-8pm
All Day Sun
BAR OPEN LATER
3270 St. Hwy 35 • Frederic, WI



Wolter's Shoreview SUPPER CLUB
Deck Dining Overlooking Beautiful Pike Lake
Your Hosts: Tony Wolter & Family
Fine Dining and Cocktails
Pontoon Rentals Available
796 100th Street • Amery, WI 54001
715-268-8774



Balsam Lake Cafe
EST. 2019
It's about good food
On Main Street across from the water tower

- Locally sourced & made fresh whenever possible
- Open 7 Days a Week
- Order online & drive through pickup available
- Ask us about catering your event

403 Main Street • Balsam Lake, WI
www.balsamlakecafe.com
Facebook Instagram @balsamlakecafe



Dining Guide

Bars & Grills

Amery Ale Works

588 115th St
Amery, WI 54001
715-268-5226
<http://www.ameryaleworks.com/> 
Amery Ale Works is a local taproom situated in a renovated barn. We specialize in craft beer, wine, good food and good fun. We often host a variety of events and welcome you to the community of Amery, WI.

Barrel House

3270 State Road 35
Frederic, WI 54837
715-327-4626
<https://www.facebook.com/Barrel.House.19/> 
Bar/restaurant sitting atop 5 acres of beautiful countryside views. ATV/snowmobile trails right in our backyard!

Birch Street Bar

117 Birch St E
Amery, WI 54001
715-268-8922
Great place for friendly conversation, cold beer & karaoke.

Dugout Bar & Grill

2491 240th St
Cushing, WI 54006
715-648-5275
Fun atmosphere, good people, and great food! Stop in and feel welcome!

Hotel Bar & Grill

112 Railway Ave
Turtle Lake, WI 54889
715-986-4910
<https://www.facebook.com/HotelBarandGrill/> 
Serving daily lunch specials, nightly dinner specials, our famous tacos, everyone's favorite BBQ ribs & the area's best Friday fish fry.

Skol Bar & Grill

135 Oak St W
Frederic, WI 54837
715-327-9979
<https://www.facebook.com/SkolBarFrederic/> 
Bar and grill located in downtown Frederic serving the best burgers and fresh-cut french fries around!

Spare Time Bowl, Bar & Grill

440 Industrial Ave
Turtle Lake, WI 54889
715-986-4244
<https://www.facebook.com/Spare-Time-Bowl-Bar-Grill-126177546442/> 
8-lane bowling center, bumper bowling, full menu, broasted chicken, homemade pizzas, party room, family fun, birthday packages.

Tac-Two Sports Bar & Grill

105 Keller Ave N
Amery, WI 54001
715-268-8222
<http://tactwobarandgrill.com/> 
Our extensive menu includes appetizers, Tac-Two's famous wings, sizzling burgers, pizzas, salads, sandwiches, and wraps.

For a complete listing, contact the
Polk County Information Center.



KJ's NEW NORTH
Ice Cream • Coffee • Sandwiches • Pastries
(715) 614-1569

CALL FOR HOURS!
Ice Cream • Coffee • Deli
Sandwiches • Pastries
Catering • Private Chef

104 1st Ave E, Balsam Lake, WI 54810  



FRONTIER RESTAURANT
HOME COOKING • DAILY SPECIAL
BREAKFAST • LUNCH & SUPPER

LARGE MENU WITH SENIOR
MENU & KIDS MENU

HOURS: MON - SAT: 6am-8pm
SUN: 6am-2pm

Hwy 8 & 63 • Across from the Casino
(715) 986-4797

LOTS OF HOMEMADE
SOUP & DESSERTS
TO GO ORDERS WELCOME!

Calendar of Events 2020

*TIMES & EVENTS ARE
SUBJECT TO CHANGE

JANUARY

- 1-31 Amery - Art Exhibit @ ArtZ Gallery
1 Amery - First Hike & Fat Bike @ Amery Parking Lot, 10am
4 Luck - Football Ice Fishing Contest on Bone Lake, 8am-3pm



- 10 Amery - A Student Art Exhibit @ Northern Lakes Center for the Arts, 7:30pm
18 Clear Lake - 104th Annual Fireman's Oyster and Chili Feed @ Community Center
18-19 Statewide - Free Fishing Weekend
25 Balsam Lake - Ice Fishing Contest on Balsam Lake, 8am-2pm
25 Frederic - Winter Fun Day - Coon Lake Ice Fishing Contest and Much More, 10am-3pm
25 Amery - Candlelight Ski @ Soo Line Park, 5:30pm; Fat Bike, 7pm
25 Clayton - Richardson Sportsmen Club 5th Annual Predator Hunt
26 Amery - St. Joseph's Ice Fishing Contest @ North Twin Lake, 7am-2pm

FEBRUARY

- 1-28 Amery - Art Exhibition @ ArtZ Gallery
1 Amery - Wanderoos Community Club Ice Fishing Contest @ Lake Wapogasset, 8am
1-2 Balsam Lake - Winterfest
2 Clayton - 59th Annual Ice Fishing Contest on Lake Magnor
6-8 Luck - Winter Carnival: Parade, Vintage Snowmobiles, Lion's Breakfast, Fireworks
7 Amery - An Art Exhibit Opening @ Northern Lakes Center for the Arts, 7:30pm
7 Luck - Fireworks @ Big Butternut Lake

- 8 Luck - Torchlight Parade
8 Centuria - Unity FFA Alumni Ice Fishing Contest @ Long Lake
8 St. Croix Falls - Candlelight Ski @ Wisconsin Interstate Park, 6-9pm
8 Amery - "Love Poems for St. Valentine's Day" @ Northern Lakes Center for the Arts
9 Balsam Lake - American Legion - Turkey Dinner
15 Osceola - Big Lake Ice Fishing Contest, 10am-2pm
15 Clam Falls - Winter Carnival/Ice Fishing Contest
16 Clayton - Ice Fishing Contest on Lake Magnor
23 Amery - Lion's Ice Fishing Contest on Bear Trap Lake, 8am-2pm

MARCH

- 1-31 Amery - Art Exhibition @ ArtZ Gallery
6 Amery - An Art Exhibit Opening @ Northern Center for the Arts, 7:30pm
14 Amery - "Somethin' for the Wearin' o' the Green" @ Northern Lakes Center for the Arts
28-29 Dresser - Gun Show @ Trollhaugen
28-29 Amery - MapleFest @ Glenna Farms



APRIL

- 1-30 Amery - Art Exhibit @ ArtZ Gallery
4 Amery - 16th Annual Spring Show @ Amery Ice Arena, 9am-4pm
4 Amery - "A Dramatic Reading" by members of Northern Lakes Center for the Arts
4 Countywide - Maple Syrup Tour - 14 Different Sugar Houses, 9am-5pm
4 St. Croix Falls - Alliance Church of the Valley Easter Egg Hunt, 10am
4 St. Croix Falls - Easter Egg Hunt @ Howlin' Wolf Creek Bar, 1pm

- 4 Clear Lake - Easter Egg Hunt @ First Lutheran Church, Registration, 9:30am
4 Northwest Wisconsin - Maple Syrup Farm Tours, 9am-5pm
www.morleymaplesyrup.com
4 Luck - Northland Ambulance Smelt Fry & Auction @ Luck Fire Hall, 3pm
11 Luck - Easter Egg Hunt @ DBS/ Lion's Hall, 10am
11 Balsam Lake - Egg Hunt @ Pine Park, 10am
11 Turtle Lake - American Legion Smelt Fry, 4pm
11 Amery - Annual Easter Egg Hunt @ Soo Line Park, 10am
11 St. Croix Falls - Polk County Sheriff's Department Easter Egg Hunt @ Polk County Fairgrounds
Clear Lake - 50th Anniversary Earth Day Celebration
18 Dresser - Dresser, Osceola, Garfield Fire Association 13th Annual Spaghetti Fund Raiser, 3pm
18 Cushing - Spring Bash @ Cushing Community Center
25 Amery - Work, Play Earth Day @ Stower Seven Lakes State Trail

MAY

- 1-31 Amery - Art Exhibit @ ArtZ Gallery
1-31 Turtle Lake - St. Croix Casino Anniversary
1-3 Polk County - Earth Arts Spring Tour
1 St. Croix Falls - Falls Sampler @ Polk County Fairgrounds, 5:30-8:30pm
1-2 St. Croix Falls - Spring Awakenings Festival
2 Balsam Lake - Balsam Lake Spring Opener Fishing Tournament
2 Milltown - River's Run & Rally 5K and Fun Day
2 Amery - PowerUp Family 2K & 5K on Stower Seven Lakes State Trail, 8:30am Start
2 Luck - Aebleskiver Dinner @ West Denmark Hall, 3:30-7pm
3 St. Croix Falls - Woolly Mammoth Mountain Bike Race, Register at St. Croix Falls High School
16 Turtle Lake - Spring Market - Plant, Book, and Craft Vendors @ Village Park

- 16 St. Croix Falls - Farmer's Market every Saturday through end of October, 10am-1pm
22-23 Luck - Spring Plant Sale & Local Food Fair @ Café Wren
22-25 Dresser - 52nd annual Memorial 4x4 Total Off Road Rally @ Trollhaugen
23 Balsam Lake - Polk County Museum Opens
23 Frederic - Soo Line Depot Museum Opens



JUNE

- 1-30 Amery - Art Exhibition @ ArtZ Gallery
2 Luck - Music @ Triangle Park - Every Tuesday, June through August
5 Balsam Lake - Farmer's Market @ Our Lady of Lakes Catholic Church Parking Lot - Every Friday, June through Fall
5 Osceola - Farmer's Market @ Mill Pond Park - Every Friday, June through October, 2-6pm
5 St. Croix Falls - Music on the Overlook, 6:30pm
6 Amery - Farmer's Market @ Soo Line Park - Every Monday and Saturday, June 6 through October
6 Clear Lake - Kick-Off to Summer & Ice Cream Party @ Clear Lake Park
6 Frederic - Farmer's Market @ Inter county Leader Parking Lot, Every Saturday, June 6 through Fall
6 Milltown - Kids "R" 1st Fishing Contest on Half Moon Lake
6 St. Croix Falls - Farmer's Market every Saturday through end of October, 10am-1pm
6 Milltown Annual Dairy Breakfast @ Milltown Community Center-Arts & Crafts, Petting Zoo, Hayrides, 8-11am
6 Osceola - Rhubarb Fest @ Mill Pond Park



There's a Lot Going on *in Polk County*

- 6-7 Statewide — State Parks Open House Weekend
- 6-7 Amery — Amery Trail Days & Fly-In
- 6-7 Nationwide — Trails Day — Free ATV, Biking, State Parks
- 6-7 Statewide — Free Fishing and Trails Weekend
- 9 Luck — Music In Triangle Park, 6:30pm
- 12 St. Croix Falls — Music on the Overlook, 6:30pm



- 12-13 Clayton — Rickety Chickety
- 13 Deer Lake — Neil McKenzie Youth Fishing Contest www.neilmckenzieyouthfishingcontest.org
- 13 Luck — FFA Alumni Truck/Tractor Pull
- 13 Amery — "Taste of Glenna Farms" @ Glenna Farms, 11am-4pm
- 13-19 St. Croix River Association Paddle
- 13 St. Croix Falls — City of Trails Festival 5K & 10K Walk/Run, Canoe Tours, Live Music, Food, Hikes
- 16 Luck — Music in Triangle Park, 6:30
- 19 Amery — Music on the River- Riverside Hitmen @ Michael Park, 5pm
- 19 St. Croix Falls — Music on the Overlook, 6:30pm
- 19-20 Clayton — Truck and Tractor Pull
- 19-20 Turtle Lake — Summer Solstice Celebration @ Tanner Ave & Library Lot, 5-8pm
- 19-21 Clayton — 54th Annual Clayton Cheese Days
- 20 Amery — Triathlon on Stower Seven Lakes State Trail, 9am
- 20 Amery — Woman's Club Art Fair @ North Park, 9am-3pm
- 20-21 Frederic — Family Days — Fireworks, Concessions, Strawberry Shortcake @ Depot
- 21 Clayton — Clayton Lions Club Demo Derby
- 23 Luck — Music in Triangle Park, 6:30pm
- 26-28 Milltown — 71st Annual Fisherman's Party
- 26 St. Croix Falls — Music on the Overlook, 6:30pm
- 25-28 Clear Lake — Heritage Days
- 27 Balsam Lake — Water Ski Show in front of Reed's Sunnyside Marina, 7pm
- 28 Cushing — Sterling Settler's Picnic @ Community Center, 1pm
- 30 Luck — Music in Triangle Park, 6:30pm

JULY

- 1-31 Amery — Art Exhibition @ ArtZ Gallery

- 3 Amery — Giant Ice Cream Sundae @ Soo Line Park Noon
- 3 Osceola — Fireworks Express Train Ride @ Osceola Train Depot to Marine on St. Croix
- 3-5 Balsam Lake — Freedom Fest — Arts & Crafts, Boat Parade, Street Dance, Fireworks
- 4 St. Croix Falls — Music on the Overlook, 6:30pm
- 4 St. Croix Falls — Farmer's Market every Saturday in July, 10am-1pm
- 4 Amery — Fireworks @ Soldier Field, Dusk
- 4 Amery — Wapo-Beartrap 5k Fun Run @ Stower Seven Lakes State Trail
- 4 Clam Falls — 4th of July Parade and Fireworks
- 4 Wanderoos — Independence Day Celebration Firework at the ballpark
- 7 Luck — Music in the Park @ Triangle Park, 6:30pm
- 9-12 Centuria — Memory Days — Craft Sales, Street Dance, Car Show, Parade, Antique Tractor Show/Pull



- 10 St. Croix Falls — Music on the Overlook, 6:30pm
- 10-12 Turtle Lake — Inter-County Fair & Grand Parade
- 14 Luck — Music in the Park @ Triangle Park, 6:30pm
- 17 Amery — Music on the River & Car Show at Michael Park, 5pm
- 17 St. Croix Falls — Music on the Overlook, 6:30pm
- 17-19 Luck — Lucky Days Festival — Parade, Classic Car Show, Bed Races
- 17-19 River Spirit Celebration — Car Show, Parade, Fireworks and More
- 18 Balsam Lake — Bass Classic Fishing Contest on Balsam Lake
- 21 Luck — Music in the Park @ Triangle Park, 6:30pm
- 24 St. Croix Falls — Music on the Overlook, 6:30pm
- 25-26 Frederic — 53rd Annual Gem and Mineral Show Frederic, WI High School Gym, Sat. 10-5pm, Sun 10-4pm
- 28 Luck — Music in Triangle Park, 6:30pm
- 30-8/2 St. Croix Falls — Polk County Fair @ Polk County Fairgrounds
- 31 St. Croix Falls — Music on the Overlook, 6:30pm

AUGUST

- 30-8/2 St. Croix Falls — Polk County Fair @ Polk County Fairgrounds
- 1-31 Amery — Art Exhibition @ ArtZ Gallery
- 1 Amery — Half Marathon @ 8am
- 1 St. Croix Falls — Farmer's Market every Saturday in August, 10am-1pm
- 4 Clayton — Community National Night Out
- 4 Luck — Music in the Park @ Triangle Park, 6:30pm
- 4 Turtle Lake — National Night Out @ Village Park
- 7 St. Croix Falls — Music on the Overlook, 6:30pm
- 8 Clayton — Youth in the Outdoors
- 8 Luck — Luck Fire Department Corn Feed
- 8-9 Lewis — Charles E. Lewis Days — Parade, Arts & Crafts and Much More
- 8 Luck — Fire Department Corn Feed
- 9 Turtle Lake — Vintage Cars & Crafts in the Park @ Village Park
- 11 Luck — Music in Triangle Park, 6:30pm
- 13 Luck — Wren Ride — Group Bike Ride from Café Wren, All Levels Welcome, 5-6pm
- 14 St. Croix Falls — Music on the Overlook, 6:30pm
- 15 Cushing — Fun Day & Adult Soap Box Derby
- 15 Frederic — Frederic Festival @ Soo Line Park. Arts & Crafts, Pottery, Woodworking
- 15 Osceola — Valley Brew Fest. Live Music and Craft Beer Tasting, 4-8pm, valleybrewfest.net
- 15-16 Clayton — 35th Annual Moon Lake Threshing Bee
- 15-16 Turtle Lake — Moon Lake Threshing Bee
- 21 St. Croix Falls — Music on the Overlook, 6:30pm
- 28 St. Croix Falls — Music on the Overlook @ Polk County Fairgrounds, 6:30pm
- 29 St. Croix Falls — Ribfest @ Polk County Fairgrounds, 11am-7pm, Featuring Chris Kroeze



- TBD Balsam Lake — Ski Show at Reeds Sunnyside Marina, 6pm
- TBD Balsam Lake — Fire Department Demo Derby

SEPTEMBER

- 1-30 Amery — Art Exhibition @ ArtZ Gallery
- 4-6 Osceola — Osceola Community Fair — Midway, Truck/Tractor Pull, Live Music, Parade
- 5 Clayton — Clayton Fire Department Truck/Tractor Benefit Pull
- 5 St. Croix Falls — Farmer's Market every Saturday, 10-1pm
- 5 Balsam Lake — Fire Department Truck and Tractor Benefit Pull
- 5 Balsam Lake — FFA Corn on the Curb
- 5 Osceola — Wheels & Wings @ Airport



- 7 Osceola — Harvest Bazaar @ Mill Pond Park, 10am-5pm. Crafters, Live Music, Sipping Garden
- 17-20 Amery — Fall Festival & Tractor Show
- 19 Luck — FFA Alumni Tractor & Truck Pull
- 19-20 Amery — Apple River Quilt Guild Quilt Show @ St. Joseph Catholic Church
- 19-20 St. Croix Falls — Fall Harvest Festival @ Chateau St. Croix Winery
- 20 Amery — Lion's Club Classic Car and Motorcycle Show 11-2pm
- 20 Clayton — Holy Trinity Orthodox Church Cabbage Roll Dinner
- 25-27 Fall Gallery Adventure — Polk County Information Center
- 26-27 Centuria — Baker Orchard Fall Art Festival
- 26 Cushing — River Road Ramble — St. Croix Falls-Cushing

OCTOBER

- 1-31 Amery — Art Exhibition @ ArtZ Gallery
- 1-31 Amery — Pick Your Own Pumpkins @ Glenna Farms ***WEEKENDS ONLY***
- 3 St. Croix Falls — St. Croix Falls Autumnfest and Craft Fair on Main Street and at Library
- 3 St. Croix Falls — Farmer's Market every Sat. through Oct., 10-1pm
- 10 St. Croix Falls — Lamar Fiber Fest @ Lamar Community Center, 9-4pm, 715-557-0467
- 10 Amery — Indianhead Barbershop Chorus "Harvest of Harmony" Amery High School, 2 & 7pm
- 10 Amery — Changing Colors Ride/Walk @ Stower Seven Lakes State Trail, 1pm
- 10 Luck — Gandy Dancer Marathon (Full & Half) gandyamarathon.com
- 10 Milltown — Pumpkin Festival



Come Join Us for Fun *All Year Long!*

- 10 Milltown – Fire Department Taco Feed & Live Auction, 4pm
- 10–11 Webster – 33rd Annual Mixed Sampler Quilt Guild @ Webster High School, 10am–4pm
- 10–11 Osceola – Leaf Viewing Train Rides. Call for Times: 715-755-3570
- 16–18 Osceola – Pumpkin Express Train Rides
- 18 Clayton – Moe Lutheran Lutfisk Dinner
- 18 Turtle Lake – Toy Tractor Show & Crafts
- 24 Dresser – Allied Emergency Services Halloween Party @ Dresser Community Center
- 2 Luck – Halloween Trick-or-Treat & Parade @ Main Street

NOVEMBER

- 1–30 Amery – Art Exhibition @ ArtZ Gallery

- 1 Clayton – Silver Creek Lutheran Church. Soup & Sandwich Luncheon



- 7 Luck – Luck Lutheran Fall Dinner
- 7 Osceola – Lutfisk Dinner @ Emmanuel Lutheran Church, 11–7pm
- 8 Milltown – American Legion Turkey Party @ Community Center
- 14 Cushing – Fire Dept. Venison Feed @ Community Center
- 14 Turtle Lake – American Legion Vet's Dance
- 20–21 Osceola – Doe on the Go
- 21 Wolf Creek – Chili Supper @ United Methodist Church

- 24 Amery – Parade of Lights & Light up the Town & Chili Feed at Soo Line Park, 6pm
- 27–29 Luck – Holiday Art Sale @ Café Wren
- 27–29 Taylors Falls – Taylors Falls Lighting Festival

DECEMBER

- *First Weekend of December: Clear Lake – Progressive Holiday Stroll @ Main Street
- *First Weekend of December: Clear Lake – Santa Day @ Clear Lake Area Community Center
- 1–31 Amery – Art Exhibition @ ArtZ Gallery
- 3 Clayton – Community Tree Lighting, 5:30pm
- 4–5 Luck – Luck Holiday Experience
- 4–6 Luck – Holiday Art Sale @ Café Wren
- 5 Amery – Holiday Sampler @ Glenna Farms

- 5 Amery – Holiday Stroll Downtown
- 5 Osceola – Light Up Osceola
- 5 St. Croix Falls – Fat Bike Day on Woolly Trail
- 5 Osceola – 12th Annual Vintage Sled Extravaganza @ Trollhaugen
- 5 Luck – Luck Holiday Experience
- 5 Centuria – Cozy Country Christmas
- 5 Turtle Lake – Chamber Christmas
- 5–6 St. Croix Falls – Rivertown Holiday
- 12 Milltown – Santa Day



- 31 Clear Lake – New Year's Eve Fireworks @ Clear Lake Park Chalet

*TIMES & EVENTS ARE SUBJECT TO CHANGE



St. Croix Falls, WI
Polk County Fair Society Inc.

July 30-Aug 2, 2020

Join us for a Family & Friends Get-Together at the Polk County Fair!!

800 E Louisiana St. | St. Croix Falls, WI

www.polkcountyfair.com • info@polkcountyfair.com

Mr. Ed's Magical Midway

Animal Shows • 4-H & Open Class Exhibits • Entertainment

Main Stage Shows • Informational Seminars

Garden Tractor Pull • Truck Pull • Tractor Pull

Children's Activities • Demo Derby and much, much more!

A great place for weddings, family gatherings, benefits, company outings!

Polk County

Communities

Embrace the good life found in our communities, which range in size from progressive small cities to rural villages. Each is unique & full of old-fashioned charm.

COMMUNITIES

photo © Dean S Acheson

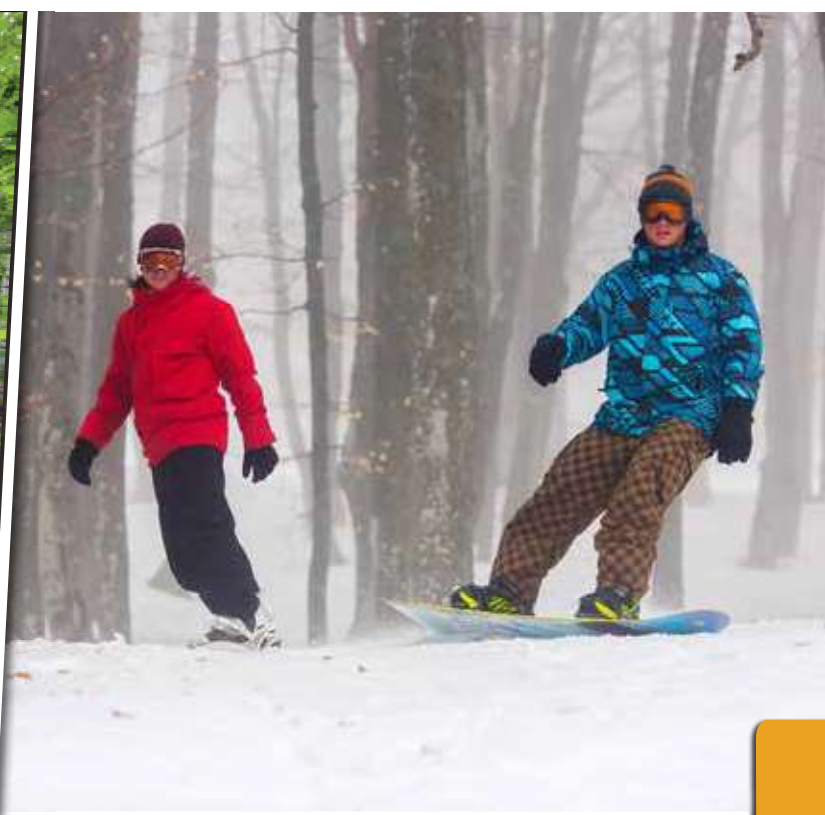
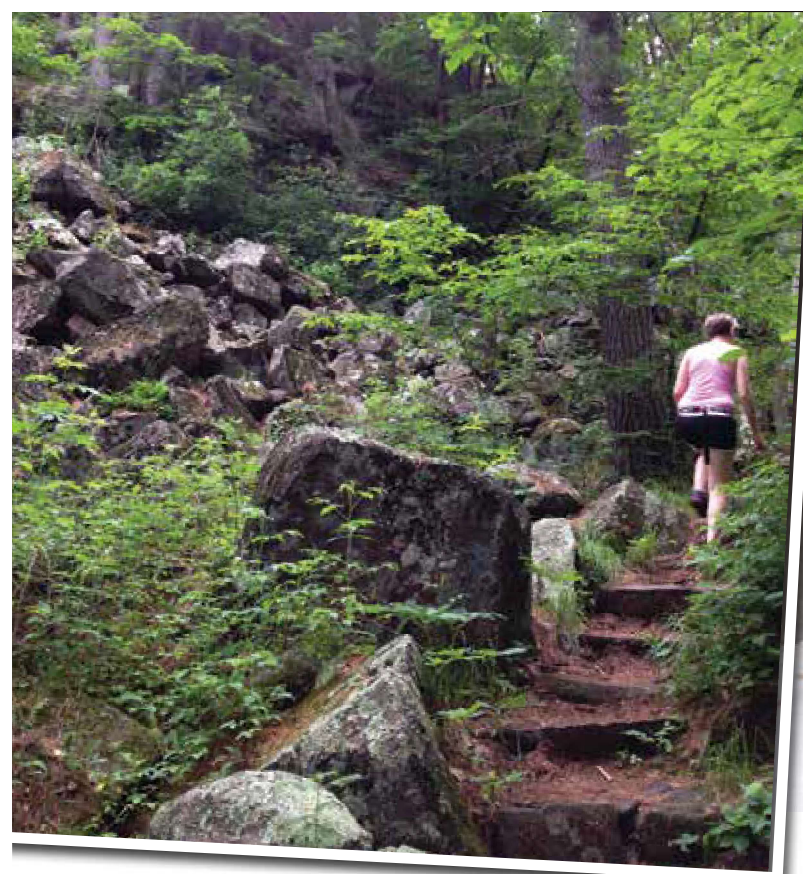
When it's time to say "Let's go!," Polk County is ready with dozens of outdoor recreation possibilities that span the four seasons. Coupled with the indoor attractions, the welcome mat is out for families with children ranging from the very young to teens. Couples looking for romantic getaways won't be disappointed either.

Our ancestors certainly had their fun, but they would be amazed with ziplining, rock climbing, ATViing and snowmobiling that you will find here. The fun doesn't stop there, of course: there's cross-country skiing, snowshoeing, alpine skiing, hiking, road bicycling and mountain biking, boating, swimming, kayaking, horseback riding, paddlewheel boat tours, train rides, and more.

You'll find our communities loaded with contemporary charm, flanked by bucolic byways, picturesque farms, and lakes – lots of them. Balsam Lake, Clear Lake, and Turtle Lake take their names from lakes of the same name. St. Croix Falls grew up with the lumbering era that relied on the St. Croix River to move logs downstream. Amery is on an isthmus nestled between the Apple River and Pike, North Twin, and South Twin lakes. Brighten up the holidays with visits to Amery and Turtle Lake, where they turn their park into a magical, lighted winter wonderland. Turtle Lake also has a casino for non-stop action.

Beautiful parks – from ones in neighborhoods to the fabulous Interstate Park – are perfect places for summer picnics, casual walks, or a game of horseshoes. Kick off the sandals and walk the sandy beaches at Lake Magnor, near Clayton. Straight Lake State Park in Luck is the state's latest park.

Seven of our communities have manicured public golf courses that challenge golfers of every skill level: Amery, Balsam Lake, Clear Lake, Frederic, Luck, Osceola, and St. Croix Falls. Among the occasional hazards: a brown-eyed deer walking the fairway or an eagle soaring above. Stop by or call the Information Center, and we'll be glad to provide directions and other information on each.



Stroll through history at your leisure with a visit to one of the museums located in Polk County. Clear Lake has a museum devoted to U.S. Sen. Gaylord Nelson, founder of Earth Day, and Burleigh Grimes, the last legal spitballer and member of the Baseball Hall of Fame. Frederic's museum is a renovated 1901 Soo Line Depot. The former county courthouse and now Polk County Historical Museum in Balsam Lake has an amazing three stories of exhibits and displays (the Lumber Room exhibit is the newest). Luck Museum features the original Duncan Yo-Yo collection.

Festivals, competitions, and celebrations are major draws to Polk County when it's time to fill in the blank pages on weekends. Milltown hosts an outstanding Fisherman's Party each summer, as does Osceola with its "Wheels & Wings" festival. Amery also hosts a festival and fly-in. Cushing Fun Days feature a soapbox derby for adults! Tractor pulls, ATV pulls, county fairs, and much, much more can be seen at various communities throughout the year.

The Information Center has a complete listing of churches and other houses of worship with telephone numbers so you can get times of services, locations, etc. Call 1-800-222-7655, e-mail info@polkctytourism.com, or stop by the Information Center.

Sprinkle your recreation with great scenery and miles of trails. Meet up with friends at the trailhead of the Gandy Dancer State Recreation Trail at St. Croix Falls. Be prepared to say hello to several communities as you bike or hike its path northward: Centuria, Milltown, Luck, Frederic, and Lewis. Osceola – now there's a place you can hike to the stars and down the stairs! It's 156 steps down to Wilkie Glen, past the magical Cascade Falls (bathed in colored lights during the evening) and along the St. Croix River. Or take the steep route up the Osceola Bluff Trail.

When winter comes calling, Trollhaugen, near Dresser, offers alpine skiing, snowboarding, and snow tubing. Each winter, the smallest of small communities spring up on many lakes in the county. Pop-up ice shelters, wooden "shanties," and even \$6,000 aluminum icehouses are the real estate for anglers. Bait and tackle stores and large sporting stores can supply you with bait, ice augers, tip-ups, fishing poles, and more.



So get out there & stir up something amazing!

Four Seasons of Fun *in Polk*

SEASONS



Spring

April and May are favorite months for many of us in Polk County as the calendar transitions us to warm weather sports such as 5K and 10K marathons, golfing, biking, and hiking. Local nurseries welcome homeowners and others who want to add a splash of color to their homes after a long winter.



Summer

Our 431 lakes and many streams and rivers attract anglers and boaters. There are 36 officially designated trout streams in the county. Parks and beaches swell with campers and swimmers. Popular attractions include a zipline park and wildlife education park. Your bucket list should include Interstate Park and its fabulous gorge flanked by rocky cliffs. ATVers can explore three trails. Numerous summer festivals spring up across the landscape.



Fall

At the height of Colorama, the reds, oranges, and yellows of leaves create picture-perfect scenery to be enjoyed from about mid-September to mid-October. Be sure to check with the Polk County Information Center or local chambers for the latest color reports. We recommend visits to local farmer's markets and apple orchards for fresh produce and the award-winning wineries to tour and sample their selections.




Winter

Bundle up and frolic in the snow — sledding, cross-country skiing, snowshoeing, downhill skiing and snowboarding are among the favorite activities. Enjoy the bonfires, hot cocoa, cookies, and toasted marshmallows that warm you up. Polk County has 365 miles of state-funded snowmobile trails that network with other counties' trails for days of riding adventures. Ice fishing has a long tradition in Polk County, and you can spot small villages of ice shanties over popular fishing spots.

All-Terrain Excitement in *Polk County*

ATV & UTV



Polk County is in the heart of northern wilderness and farmland with beautiful scenery. ATV and motorbike enthusiasts can find three ATV trails in Polk County that will provide hours of riding enjoyment.

Cattail Trail

This scenic trail runs from Amery to Almena for a total of 18 miles, of which 12 miles are in Polk County. The trailhead is in Amery, where restrooms and picnic areas can be found. Along the trail, you will enjoy some of Wisconsin's most picturesque farms and forests and have the opportunity to spot lots of wildlife. The trail is a former railroad bed that runs across six bridges. The multi-use trail is open all year to ATVs and motorcycles. Because of the different types of trail users on the trail at any time, it is important to have proper trail etiquette to ensure the safety and enjoyment of all.

Sterling Trail

The Sterling Trail offers seven miles of closed-loop trail through varied terrain through farm and forest lands. The Sterling Trail is open from June 1 through Nov. 15. No dirt bikes or horses are allowed on the trail. At the trailhead, you'll find parking, a picnic area, and restrooms.

Sawmill Trail

The Sawmill Trail is open year-round and is accessible to ATVs and motorcycles. It follows 11 miles of former railroad bed. There is an ATV trail through the Village of Clear Lake. Motorcycles not licensed for highway use cannot use that village trail.



Polk County ATV Clubs


Luck ATV Club

Gary Erickson, 715-822-4152
Lisa Anderson, 715-554-1689

Southern Polk County ATV Club

Tyler Dehmer, 715-587-3996,
Tanner Olchefske, 612-208-8006

Safety First!



Your machine must be registered in the state of Wisconsin or have a trail pass in order to use these trails. Remember to obey all speed limits and other signs. ATV and UTV operators who were born after December 31, 1987 – and who are at least 12 years old for ATV and 16 years old for UTV – must complete an ATV and UTV safety certification course in order to operate on public ATV/UTV trails and areas in Wisconsin. However, DNR Conservation Wardens recommend that all ATV and UTV operators complete a safety course. For more information, call the Polk County Parks Department at 715-485-9278 or visit www.polkcountytourism.com.

Polk County

SNOWMOBILE TRAILS



Rev It Up in *Polk County*

Polk County is home to over 360 miles of state-funded snowmobile trails that are nicely groomed and well marked. Major routes such as the Gandy Dancer State Trail will take you quickly to your destination. Or ease off the throttle, and explore remote trails as they meander through breathtaking scenery.

The well-marked trails pass through farmland and forests of Polk County. Enjoy the hospitality of the communities and businesses along the way. You can find sled repairs, fuel, dining, lodging, and other necessities for your snowmobiling adventure. Snowmobile trail maps are available at many businesses.

Polk County trails connect to those in neighboring counties for extended trips. The Cattail State Trail travels nearly 18 miles on a former rail corridor from Amery to Almena in neighboring Barron County. All-terrain vehicles are allowed on the trail year-round. There are six bridges and one tunnel along the way.

Polk County's 14 snowmobile clubs lead the way in brushing, signing, and grooming the trails. They invite out-of-area riders to join them for a club ride. The public can also enjoy the fun at their fundraisers, such as poker runs and meals. They welcome new members anytime. The clubs are also excellent sources of information for trail rides. Contact a representative from the listing below:

Snowmobile Clubs

Amery Snowmobile Club

Jim Ellefson
715-268-9542
jimauto@amerytel.net

Balsam Lake Snociables

Steve Williams
715-554-1234
spwilliams53@gmail.com

Clam Falls/Lewis, EIO SnoRiders

Todd Miller
715-553-0731
mrpropane247@gmail.com

Clear Lake Ditch Dusters

Kevin Winegar
651-587-6687
kevinwinegar@nextgen-
companies.com

Cushing/Jack Pine Savages

Tammy Jensen
715-648-5311

Fox Creek Foxtrotters

Sue Wonka
715-857-5051
jwwonkda@lakeland.ws

Joelmobilers

Jill Ladwig
715-948-4112
pnjwig@amerytel.net

Luck Snowmobile Club

Mary Erickson
715-822-4152
715-822-4170
erickson4111@hotmail.com

McKinley/Snowpackers

Tim Rouzer
trouzer@centurytel.net

Milltown Sno Rovers

Melvin Smith
715-553-0176
msmithfarm@yahoo.com

Osceola Valley Sno-Goers

Sheryl Hoiby
715-755-2452

Polk County Youth Snowmobile Club

Joey Gaffney
djgaffney@centurytel.net

St. Croix Falls/Wild River

Dale Gunderson
715-557-0600

West Sweden/SNOWS (Snow Neighbors of West Sweden)

Doreen Coen
715-220-1481,
doreenbos@centurytel.net

The Wisconsin Trail Pass is **\$30** for snowmobilers who are **NOT** members of a snowmobile club and the Association of Wisconsin Snowmobile Clubs (AWSC).

A **\$10 discounted** annual Wisconsin Trail Pass will be available to members who currently belong to **BOTH** a Wisconsin snowmobile club and the AWSC. Non-resident trail pass fee is \$50 per year. There is NO discounted option for nonresident trail pass if the sled is registered outside of Wisconsin. Non-residents may buy a discounted trail pass if their snowmobile is registered in Wisconsin and they belong to a snowmobile club and the AWSC.

For more details on finding a WI snowmobile club to join or further details on the WI Trail Pass, please visit the AWSC website at www.awsc.org. For more information on the trail pass and snowmobiling in Wisconsin, visit the WI DNR website at dnr.wi.gov and search "snowmobile" or call 1-888-936-7463

If your sled is not registered in the state of Wisconsin, you will need a non-resident snowmobile trail pass on all county trails. Trail passes are available at any DNR licensing station: Amery True Value, Amery; Arrow Marine, St. Croix Falls; St. Croix Outdoors, St. Croix Falls; Breezy Bay Motor Sports, Balsam Lake; Brenizer Motorsports, Frederic; Deer Lake Sports, St. Croix Falls; Lakeland Power Sports, Inc., Clear Lake; Luck Sport and Marine, Luck; and Morks Big Lake Store, Osceola.



Discover, Explore & Enjoy *Our Trails*

PLEASE CALL AHEAD TO CHECK TRAIL CONDITIONS BEFORE TRAVELING TO YOUR DESTINATION

TRAILS

1. Gandy Dancer State Trail

Starts at the Polk County Information Center, 98 miles along old railroad grade between St. Croix Falls and Superior. 47 miles from St. Croix Falls to Danbury is surfaced with crushed limestone and is a state recreational trail. (800) 222-POLK

SUMMER: Hiking, Biking; Bikers 16 and older need bike pass or DNR patron license. Passes available at local retailers or Polk County Information Center.

WINTER: Snowmobiling

2. Cattail Trail

18 miles from Amery to Almena. Trailhead & trailer parking next to Apple River in Amery. (800) 222-7655 or (715) 483-1410

SUMMER: Hiking, Biking, ATVing, Horseback Riding, Motorcycling

WINTER: Snowmobiling, ATVing

3. Interstate Park

12 trails, 10 miles through unique glacial terrain overlooking St. Croix River. Four observation points; warming shelter for skiers. Ice Age Interpretive Center serves as trailhead, access to the Ice Age Trail. (715) 483-3747

SUMMER: Hiking

WINTER: Cross-Country Skiing & Snowshoeing

4. Sterling Forest

7-mile closed loop, wooded. Dirt bikes, motorcycles and horses prohibited.

(800) 222-7655

SUMMER: ATVing

5. Somers Lake Trail

5-mile closed loop divided into shorter loops. Woods and lakeview.

(715) 485-9294 or 1-800-222-POLK

SUMMER: Hiking

WINTER: Snowshoeing

6. Balsam Branch

Adjacent to Kennedy Environmental Area near Amery. Groomed for classic & skate skiing.

(715) 268-7565 or (715) 268-2920

WINTER: Cross-Country Skiing. For skiing conditions: skinnyski.com or norwiski.com

7. Coon Lake Trail

(715) 327-4294 or (800) 222-POLK

SUMMER: Hiking

WINTER: Hiking

8. Trade River Trail

8.5K groomed for classical and skate skiing.

(715) 327-4294 or (800) 222-POLK

SUMMER: Hiking

WINTER: Cross-Country Skiing. For skiing conditions: skinnyski.com or norwiski.com

9. Sawmill Trail

Between Clear Lake and Clayton. Popular for mountain biking.

(800) 222-7655

SUMMER: Biking, Hiking, ATVing, Motorcycling

WINTER: Snowmobiling, ATVing

10. Ice Age Trail

National Scenic Trail. Starts in St. Croix Falls and crosses the state. Hiking only.

(800) 222-7655

11. Dry Creek Trails

North of Hwy. 8 near Deer Lake. Park on 140th Ave.

SUMMER: Hiking

WINTER: Cross-Country Skiing, Snowshoeing

12. Trade River Horse Trails

35 miles of maintained and marked trails, primitive camping. Located in southern half of Gov. Knowles State Forest.

(715) 463-2898

ALL YEAR: Horseback Riding, Horse-Drawn Driving

13. Ridge View Trail

Near the St. Croix River south of St. Croix Falls. Trailhead parking off County Road S.

SUMMER: Hiking

WINTER: Cross-Country Skiing, Snowshoeing

13. St. Croix Falls Trails

"City of Trails," excellent hiking trails within scenic, hilly city limits.

(715) 483-3929.

SUMMER: Hiking, Biking

WINTER: Cross-Country Skiing, Snowshoeing

15. Wilke Glen & Osceola Bluff Trail

Descend 156 steps into Wilkie Glen, past Cascade Falls and along the St. Croix River.

SUMMER: Hiking

WINTER: Snowshoeing

16. Standing Cedars

On the bluffs of the St. Croix River south of Osceola. One trail extends to the riverbank.

SUMMER: Hiking

WINTER: Cross-Country Skiing, Snowshoeing

17. Stower Seven Lakes State Trail

Non-motorized 14-mile Stower Seven Lakes State Trail begins at Soo Line Park (off Harriman Avenue) in Amery and ends at Lotus Lake County Park, about one mile from Dresser on 90th Avenue.

SUMMER: Hiking, Biking

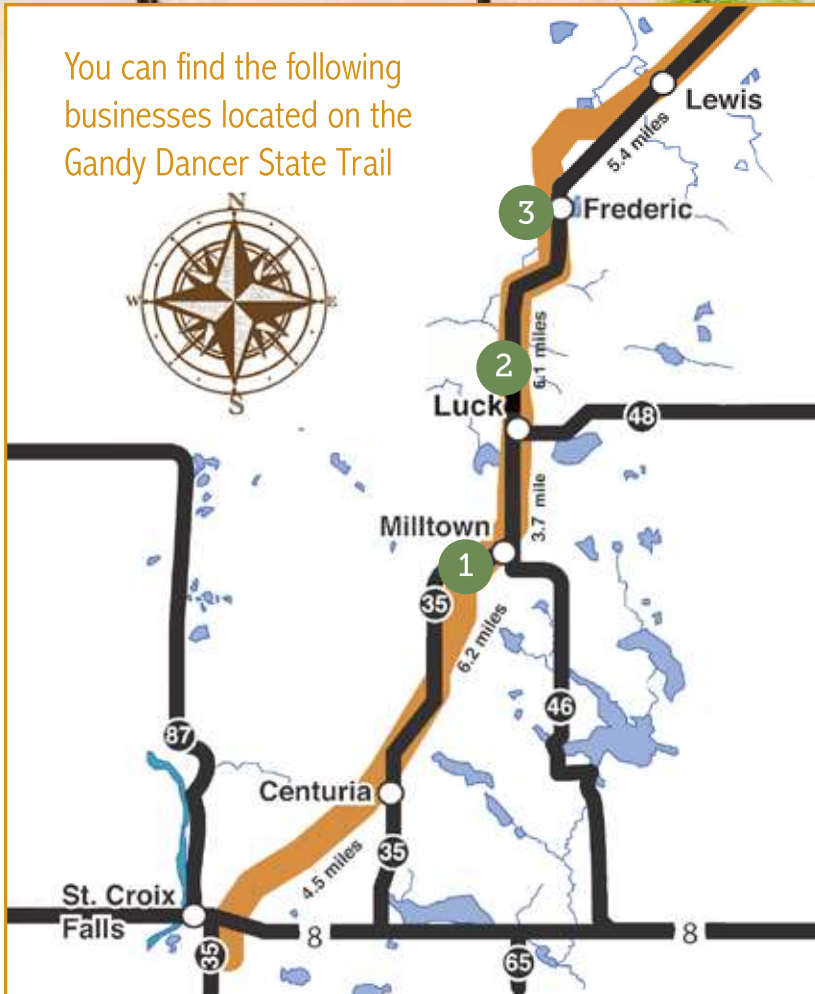
WINTER: Cross-Country Skiing, Snowshoeing. For skiing conditions: skinnyski.com or norwiski.com.



Gandy Dancer

State Trail

You can find the following businesses located on the Gandy Dancer State Trail



Mileage between Towns along the Gandy Dancer State Trail

St. Croix Falls to Centuria	4.5 miles
Centuria to Milltown	6.2 miles
Milltown to Luck	3.7 miles
Luck to Frederic	6.1 miles
Frederic to Lewis	5.4 miles
Lewis to Siren	5.7 miles
Siren to Webster	7.2 miles
Webster to Danbury	8.9 miles

The entire Gandy Dancer State Trail is marked with mile post signs. Maps available at **800-222-POLK** or www.polkcountytourism.com

GANDY DANCER

1

Julia's Java
201 Main St. W., Milltown, WI 54858
Located Near the Gandy Dancer State Trail
Bakery, Espresso Drinks, Soup, and Sandwiches
(715) 205-4695 | www.JuliasJava.net

2

OPEN DAILY OUTDOOR DINING
TRAIL ACCESS ESPRESSO FOOD

Cafe Wren
LUCK, WISC.
CAFEWREN.COM

3

Frederic Depot/Museum
1901 Soo Line Depot
Museum • Trail Rest Stop
Open Sat & Sun & Holidays
11am-4pm, Memorial Day
Weekend through Leaf Season

210 Oak Street West
715-327-4158
www.FredericWI.com

Amazing Area Parks *in Polk*

AREA PARKS

Saint Croix National Scenic River Way

Extends for some 250 miles along both sides of the St. Croix and Namekagon Rivers. Primitive camping only. Excellent fishing, canoeing, and wildlife watching. Visit www.nps.gov/sacn or call (715) 483-3284.

Interstate Park

Oldest state park in Wisconsin. Unique geology found nowhere else. Ice Age Interpretive Center open daily. Year-round camping on St. Croix River; some sites handicap accessible. Several picnic shelters, scenic overlooks. Swimming beach with bathhouse but no lifeguards. Hiking, snowshoe & cross-country ski trails, boat access, shore fishing. Open year-round, park sticker required. Call (715) 483-3747 or visit www.dnr.state.wi.us/org/land/parks/specific/interstate/.

Apple River County Park

Woods, trails, 18 acres along the Apple River north of Amery. Picnic shelter, playground, restrooms, well. Hike, canoe, snowmobile. Camping available.

Atlas County Park

On Long Trade Lake northwest of Luck. Comprises three land areas separated by water. Footbridge, ballfield, boat landing, picnic shelter, and playground. Fishing, hiking, snowmobiling.

Black Brook County Park

Large dam creates the Black Brook Flowage of the Apple River southwest of Amery. Boat landing, picnic shelter, playground.

Somers Lake Recreation Area

East of Frederic. Hiking trail plus hunting in season; snowshoe trail.

D.D. Kennedy Environmental Area

106 acres along Balsam Branch Waterway south of Balsam Lake. Canoeing, fishing, hiking and cross-country ski trails. Picnic shelter and playground.

Garfield Recreation Area

A 188-acre area in Garfield Township between Balsam Lake and Amery south of Hwy. 8. Cross-country skiing and mountain biking, plus hunting in season.

Lotus Lake Park

Southeast of Dresser. This 18-acre park offers flowery views of American lotus beds. Picnic shelter, playground, and well. Boat landing, fishing, hiking on interpretive trail. Access to Stower Seven Lakes State Trail.

Straight Lake Wilderness State Park

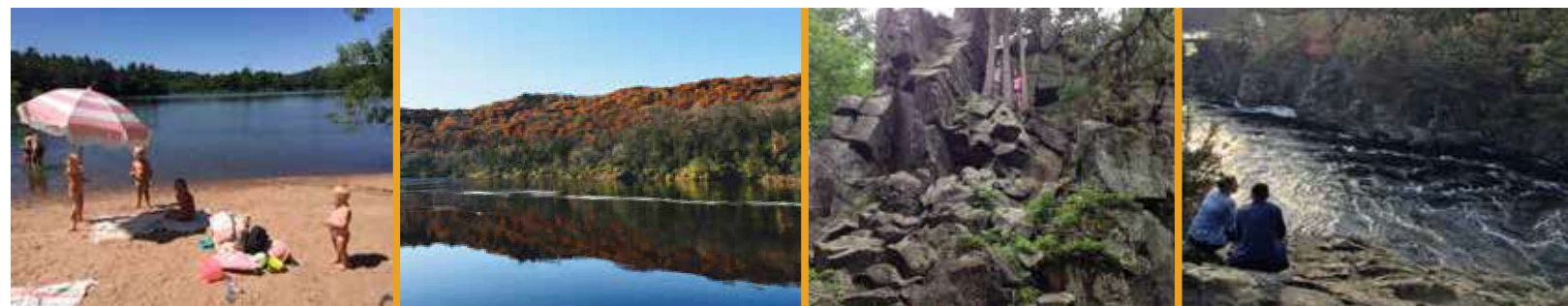
Wisconsin's newest state park and Straight River Wildlife Area located northeast of Luck near intersection of Hwy. 48 and County Road I. Over 2,700 acres includes mature hardwood forest, three flowages, and varied habitat for rare plant and bird species.

Lake Wapogasset Park

Located off County Road F on the southeast shore of Lake Wapogasset in the town of Garfield. Fishing piers, 24-hour boat launch, playground, picnic shelters, restrooms.

Plus Many More Local Parks

Call (800) 222-POLK for information on the many fine county and city parks offered in every part of the county.



Rivers & Lakes

Where It All Begins

Thousands of years ago, a massive glacier inched its way from the north and onto this land. The weight of the glacier and ensuing meltwater carved up the landscape upon its retreat, leaving spectacular features such as the 200-foot-high bluffs that guard the mighty St. Croix River. Elsewhere, lakes by the hundreds were formed – 431 in all – in what would become modern-day Polk County. Rivers and streams carved their own niches. The St. Croix and Apple rivers attract boating, fishing, kayaking, canoeing, and tubing enthusiasts. Over 36 trout streams cover 98 miles, offering fly fishermen fantastic casting opportunities. These bodies of water provide resting, feeding, and nesting places for bald eagles, ospreys, and other wildlife, including the shy white-tailed deer that come to drink at water's edge. Sandy beaches with easy public access and clean water for swimming can be found most anywhere in the county.

LARGER FISHING LAKES WITH PUBLIC BOAT ACCESS | PUBLIC BEACHES*

Balsam Lake 2,054 acres *

Public Boat Access:
1 on West shore off Hwy. 46
1 on Northwest shore off Hwy. 46
1 on Northeast shore off Co. Rd. I
1 on Northeast shore off Co. Rd's G & GG

Big Round Lake 1,015 acres

Public Boat Access:
Located on West shore of lake off Co. Rd. I & Big Round Ave.

Bone Lake.....1,781 acres *

Public Boat Access:
1 on North end off Hwy. 48 & Co. Rd. I
1 on South end off Co. Rd's I & G.

Bass Lake 138 acres

Public Boat Access:
Located on North end of lake off Hwy. 48.

Bear Trap.....241 acres

Lake is located off Hwy. 46 & Co. Rd. F.

Big Blake Lake.....302 acres

Public Boat Access:
Located on Northeast shore of lake off Co. Rd. G & 80th St.

Big Butternut Lake...378 acres*

Public Boat Access:
1 on Northwest shore off Hwy. 48
1 on North end off Hwy. 35.

Big Lake.....259 acres

Public Boat Access:
Located on Southeast shore of lake off Hwy. 65 & Co. Rd. K.

Bridget Lake 95 acres

Public Boat Access:
Located on South end of lake off Hwy. 65 & 120th Ave.

Church Pine Lake..... 107 acres

Public Boat Access:
Located on South end of lake off Co. Rd. K & 180th St.

Coon Lake..... 54 acres

Public Boat Access:
Located on East shore of lake off Hwy. 35 & Ash St.

Deer Lake807 acres

Public Boat Access:
Located on West shore of lake off Hwy. 35.

Diamond Lake..... 126 acres

Public Boat Access:
Located on North shore of lake off 360th Ave./ County Line 150th St.

Half Moon Lake ... 579 acres *

Public Boat Access:
1 on West end off Hwy. 46 & 200th Ave.
1 on Southeast shore off Co. Rd's GG & G.

Herby Lake.....69 acres

Public Boat Access:
Located on West shore of lake off Hwy. 87 & 240th St. Maximum depth of 37 ft.

Horse Lake228 acres

Public Boat Access:
Located on South end of lake off Co. Rd's M & Y.

Horseshoe Lake377 acres

Public Boat Access:
Located on South-west shore of lake off Hwy. 8 & Co. Rd. T.

Lake McKenzie60 acres

Public Boat Access:
Located on North end of lake off Co. Rd. I & 280th Ave.

Lake Wapogasset 1,186 acres

Public Boat Access:
3 located along West shore off Co. Rd's C & F
2 on Southeast shore off Co. Rd's C & F.

Largon Lake..... 129 acres

Public Boat Access:
Located on South shore of lake off Co. Rd. E & 280th Ave.

Little Butternut Lake ... 189 acres

Public Boat Access:
Located on North end of lake off Hwy. 35 & Co. Rd. N.

Long Lake272 acres

Lake is located off Hwy. 46 & Co. I.

Long Trade Lake.....153 acres

Public Boat Access:
Located on Northeast shore of lake off Co. Rd's Z & B.

Lotus Lake246 acres

Public Boat Access:
Located on North end of lake off Co. Rd. MM & 90th Ave. Maximum depth of 17 ft.

Loveless Lake141 acres

Public Boat Access:
Located on South end of lake off Hwy. 46 & 150th Ave.

Lower Pine Lake90 acres

Public Boat Access:
Located on Southeast shore of lake off Co. Rd. M & 192nd St.

Magnor Lake.....224 acres

Public Boat Access:
Located on South end of lake off Hwy. 63.

Pike Lake159 acres

Public Boat Access:
Located on West shore of lake off Co. Rd. H & Pike Lake Rd.

Pine Lake82 acres

Public Boat Access:
Located on Northwest shore of lake off Co. Rd. M & W. Church Rd.

Pipe Lake270 acres

Public Boat Access:
Located on Northeast shore of lake off Co. Rd. G & 220th Ave. Maximum depth of 68 ft. Connects to North Pipe Lake.

Pipe Lake (north)55 acres

Maximum depth of 38 ft. Connects to Pipe Lake.

Poplar Lake125 acres

Public Boat Access:
Located on North shore of lake off Hwy. 8 & 208th St.

Rice Lake128 acres

Public Boat Access:
Located on South end of lake off Hwy. 35 & 200th Ave.

Sand Lake 187 acres *

Public Boat Access:
Located on Southeast shore of lake off Co. Rd. Y & 110th Ave.

Sandhill Lake..... 44 acres

Public Boat Access:
Located on Northwest shore of lake off Hwy's 87 & 35 and Co. Rd. N.

Somers Lake.....101 acres

Public Boat Access:
Located on Northeast shore of lake off Co. Rd. I & 320th Ave.

Staples Lake305 acres

Public Boat Access:
Located on North shore of lake.

Swede Lake.....68 acres

Public Boat Access:
Located on North end of lake off Co. Rd. M & 35th Ave.

Twin Lake (north)135 acres

Public Boat Access:
Located on East shore of lake off Hwy. 46.

Twin Lake (south)74 acres

Public Boat Access:
Located on North shore of lake off Co. Rd. F & 105th St.

Lake Vincent 70 acres

Public Boat Access:
Located on Southeast shore of lake off Co. Rd. I & Vincent Lake Rd.

Ward Lake91 acres

Public Boat Access:
Located on West shore of lake off Hwy. 48 & Co. Rd. O.

White Ash Lake153 acres

Public Boat Access:
2 located on West shore off Co. Rd. E
1 on East shore off Co. Rd. G & 70th St.

White Ash Lake (north).119 acres

Public Boat Access:
Located on North shore of lake off Co. Rd. E & 180th Ave.

Arts & Theater in *Polk County*

Art unlocks our imagination, makes life richer, and, most importantly, brings us to life! So live life to its fullest with a visit to Polk County's art galleries and theaters. You might even get a surprise when you stop to catch a bite to eat or have banking or medical appointments: art pieces are regularly featured on walls of local businesses and medical facilities. Our art and theater groups create works to be enjoyed by people of all ages. We invite you to embark on an art adventure you will long remember, whether viewing a painting that will stir your soul or taking in a comedy performance that will have your ribs aching with laughter!

ARTS & THEATER



ARTS IN HAND

www.artsinhand.com • 715-635-9303

Arts in Hand (formerly known as WI Northwest Heritage Passage or WNHP Artworks) represents artists in the 13 counties, whose works are for sale at the gallery in Spooner. **Mission** – The mission of Arts in Hand is to celebrate and showcase northwest Wisconsin's artisan products that are handmade and homegrown and educate the public about the contribution of the creative community to the quality of life in northwest Wisconsin promote and foster growth in northwest Wisconsin's creative industry.

FREDERIC ARTS

www.fredericarts.org • 715-327-8181

The Frederic-area organization supports artistic opportunities for people of all ages and enhances and preserves the cultural fabric of the community through educational events and programs. It sponsors various events such as writer readings and music concerts, as well as projects and exhibits. Some of these happenings take place at the Frederic Art Center, 310 S. Lake Avenue, open April-November.

NORTHERN LAKES CENTER FOR THE ARTS

www.northernlakescenter.org • 715-268-6811

Amery ranks as one of the nation's top 100 small arts towns. The center is where musicians practice, Community Theater performs, writers gather, and visual artists display works. Along with several permanent exhibits, rotating exhibits display works of up to 40 artists each year. Northern Lakes is the only rural school of this kind in the state. More than 150 students study theater, music, writing, and art. Northern Lakes partners with schools by offering enrichment programs in writing, literature and theater. The 55-member orchestra performs throughout the year and the Northern Lakes community theater group offers four productions annually. The writers' group publishes a semi-annual collection of works.

POLK COUNTY EARTH ARTS

www.earthartswi.org • 800-222-POLK

Earth Arts is an organization of local artists from throughout the Upper St. Croix Valley. Members include painters (varied media), photographers, potters, glass blowers, writers, book makers, musicians, basket makers, sculptors, chainsaw carvers, jewelers, and crafters. Earth Arts makes local galleries and studios available as sites for tour groups. This group also presents special events, sales and festivals, including the Earth Arts Art Tour, the first weekend in May.





ST. CROIX ARTBARN

www.stcroixartbarn.com • 715-294-2787

St. Croix ArtBarn is a bi-state community arts organization. Guilds include theater, visual arts, music, writing, and dance. ArtBarn has received national, state and local awards for original as well as collaborative programming with other arts and civic organizations and schools. ArtBarn offers intergenerational theatrical opportunities April through October and a month-long summer art camp for children. Other annual events include a concert series, bluegrass festival, garden tour, and art classes. ArtBarn is located at 1040 Oak Ridge Drive, one block east of State Hwy. 35 behind the Osceola Middle School.

ST. CROIX FESTIVAL THEATRE

www.festivaltheatre.org • 715-483-3387 (box office)

One Festival Theatre patron described the past 20 years of professional theater in St. Croix Falls as “world class theater in a small town package.” And, that’s what audiences have to come to expect from St. Croix Festival Theatre as they gather professional actors, directors and designers from all over the country and bring them to the St. Croix Valley each year. Combine inspiring live entertainment with Festival Theatre’s beautiful atmosphere and you’ll have a perfect getaway for couples, groups, or the entire family. The yearlong schedule includes live theater, children’s productions, concerts and other events.

OTHER ARTSY PLACES

Your art adventure trip won’t be complete without a visit to ArtZ Fine Arts Gallery, Café Wren and One 10 Gallery. ArtZ Fine Arts Gallery in downtown Amery is a treasure trove of art ranging from mixed media, pastels, watercolors and oils to photography, pottery, fabrics, blown glass, sculptures, and much more, all created by prominent local artists. ArtZ Gallery is located in the historic J. E. Harkinson building. Café Wren in Luck is a great place for your taste buds to try out their unique recipes crafted from locally grown produce. Your eyes will be treated to wonderful original art displayed on the café’s walls. Balsam Arts is located one block from the Polk County Museum on Main Street in Balsam Lake. The gallery offers year-round exhibits by national artists, and the education center provides lessons, events and opportunities for inspiration and expression. One 10 Gallery in Frederic has handcrafted and creative designed work with a great choice of art and fine craft. Polk County Information Center has a mini gallery featuring local artists.

**THE 2020
SEASON!**

**INTO THE
WOODS!**

**PRIDE &
PREJUDICE!**

**THE CRUCIBLE
& MORE!**

**LEARN MORE AT
FESTIVALTHEATRE.ORG!**

**ST. CROIX
FESTIVAL THEATRE**
Northwoods Destination for the Arts
30th Season!

**2020
SEASON
GUIDE**
FRANKLIN SQUARE
BLACK BOX THEATRE
Home of Festival Theatre

Welcome to *Balsam Lake*



Balsam Lake Area Chamber
PO Box 366, Balsam Lake, WI 54810
www.Balsamlakecc.com
info@Balsamlakecc.com

Balsam Lake Village Office
PO Box 506, Balsam Lake, WI 54810
715-485-3424 • vobl@lakeland.ws
www.BalsamlakeVillage.com

Live & Work Where You Love to Play

Established in 1905, the Village of Balsam Lake rests on the southwest shore of Balsam Lake in one of the most prime tourist locations of northwest Wisconsin. Whether you are looking to relax or take part in a wide variety of activities, both on and off shore, Balsam Lake is the place for you!

Nestled in the center of all your entertainment options, Balsam Lake has many things to offer all year long. Just minutes away are movie theaters, golf courses, casinos, antique and boutique shopping, a water park, and downhill skiing. Many trails go through Balsam Lake, offering opportunities for cross-country skiing, hiking, snowshoeing, ATVing, and snowmobiling.

In the winter, Balsam Lake is transformed into a dreamy world of cross-country skiing and snowshoeing for the silent sports crowd. Snowmobile routes become active, as riders thrill to the rush of their sleds. A meal at their favorite local establishment provides energy for the next stretch of trail. In addition to providing trail links, the frozen lake is a

magnet that draws anglers seeking a bag limit of game fish and panfish.

In the summer, the lake embraces water sport enthusiasts of all descriptions. Several quality public accesses are available where you can launch your watercraft and enjoy the lake. Take part in water sport activities, or relax while taking a leisurely cruise past the beautiful shorelines and scenery. Get out on the lake early to enjoy a beautiful sunrise, and stay out late to take in the stunning sunset views. While on the lake, you can dock up for gas, bait, and snacks at Sunny Side Marina, located right on the water. Imagine living in Balsam Lake and being adjacent to the lake of the same name with 2,054 acres of water! Anglers have a ball seeking out bass, walleye, pike, and panfish. Many come to take part in pro and amateur tournaments. Personal watercraft and skiers have plenty of room to carve up a wake. You might even see a sailboat or two catching the summer breeze. The warm months bring

the opportunity to relax on a beach towel and soak up the sun or take a swim at the town beach.

Looking for a place to camp or enjoy a picnic? Point the picnic basket toward Pine Park, a local favorite. There you will find camping facilities; showers and restrooms; a picnic shelter; grills, a softball field; basketball, tennis, and volleyball courts; a playground; a disc golf course; and a skateboard park. Having fun must have been written in the bylaws of the community's charter because there's so much to see and experience during all four seasons. Don't feel like camping? Stay at the newly remodeled Balsam Lake Motel, Ward's Balsam Beach Resort, Sunnyside Marina & Resort, Dream Catcher Inn. or Thirsty Otter Tavern & Resort.

The Balsam Lake Chamber of Commerce sponsors several events, which are fun for all ages! Winter Fest features polar plunge, adult games on the ice, and UTV races on Balsam Lake in February. Freedom Fest will be held July 3-5, 2020, and includes craft fair, fire department water fights, parade, car show, and many other activities. Cruz In Fest made its debut in 2012 over Labor Day weekend and was a huge success! Cruz In Fest is now on our list of annual events. Don't forget to participate in the annual visit from Santa and Mrs. Claus and the Christmas Day dinner. The Chamber is always looking to add more fun activities throughout the year, so make sure to visit their website at balsamlakecc.com or visit their Facebook page on a regular basis to keep up to date. There is always more fun to come!

Looking for more things to do? The active Fire Department crew holds an Easter Egg Hunt, a fundraising spaghetti dinner in March, softball tournament during the Freedom Fest, and a Demolition Derby during Corn on the Curb Days over Labor Day weekend. Enjoy some delicious food at the smelt fry in April, courtesy of the Rod & Gun Club. Specific dates for all events can be found on the Chamber's website.

Numerous options exist when it's time to treat your taste buds to an ice-cold drink or a great meal. There are several local establishments that offer both fine and casual dining. Several establishments offer Internet access as well. Speaking of food, a local farmer's market is held in the Village on Friday afternoons, June to October. The extensive selection covers all types of produce, flowers, plants, baked goods, and many more items.

The full story of the area's history can be found within the Polk County Historical Museum, which is housed in the historic courthouse in Balsam Lake. Nearby, the Public Library overflows with over 20,000 items for your reading and viewing pleasure, and it also offers Internet service.

Shop & Buy Online!!



BalsamLakeHardware.com

Hours: Mon-Fri 7am-6pm; Sat 8am-5pm; Sun 9am-2pm
Facebook: Balsam Lake Hardware & Rental



January

25 Ice Fishing Contest on Balsam Lake,
8am-2pm

February

1 Fire & Ice Plunge, 10am-1pm @ Balsam
Lake Beach
1-2 Balsam Lake Winterfest on Balsam Lake
9 American Legion – Booya Turkey Dinner

April

11 Balsam Lake Egg Hunt, 10am @ Pine Park

May

2 Balsam Lake Spring Opener
Fishing Tournament
23 Polk County Museum Opens
25 Memorial Day Dinner, Noon - 2pm
Sponsored by American Legion

June

27 Balsam Lake Invitational Ski Show
7:00pm @ Reeds' Sunnyside Marina

July

3 Fireworks
3-5 Balsam Lake Freedom Fest - Arts & Crafts,
Boat Parade, Street Dance & More
4 Freedom Fest Waterfights, 1pm @ Balsam
Lake Fire Hall
TBD Balsam Lake Ski Show, 7:00pm @ Reed's
Sunnyside Marina
18 Balsam Lake Bass Classic Fishing
Tournament

August

TBD Balsam Lake Ski Show, 6:00pm @ Reed's
Sunnyside Marina
TBD Balsam Lake Ski Show 6:00pm @ Reed's
Sunnyside Marina

September

5 Balsam Lake – Fire Department Truck and
Tractor Benefit Pull
5 Balsam Lake – FFA Corn on the Curb
5 Balsam Lake Fire Department Demo Derby
1pm @ the Fire Hall

October

10 Balsam Lake Fire Department Open House/
Pancake Breakfast, 8am-11am

Recurring Events

Balsam Lake Seasonal Farmer's Market on Fridays

Calendar 2020

BALSAM LAKE



Life's Journey Shines a Different Light on Health & Wellness



Those suffering from chronic and acute conditions such as back pain, joint pain, and arthritis have a new path to wellness and a pain-free life, according to Heather Wendt of Life's Journey Day Spa in Balsam Lake.

Life's Journey is one of only two places in Wisconsin that offer this specific unique light-based therapy using LED lights and near-infrared red light treatment. Researched and developed by NASA, the new modality has seen proven results for many.

"The LED (light-emitting diode) and near-infrared red wavelengths penetrate through the skin and into the tissue to create a chemical reaction that the body uses to decrease pain and inflammation and increase circulation," Heather explained.

She says the treatment has been successful in treating migraine headaches, sleep and digestive issues, seasonal affective disorders (SAD), and Lyme disease, which she has. The treatments can speed recovery from broken bones or traumatic brain injuries. LED facials are also offered to treat issues from severe acne to fine lines and wrinkles.

In addition to in-office visits, clients can rent the unit or buy the lights for at-home use.

Life's Journey also offers a whole-body vibration system, a chiropractic table with jade rollers and infrared heat, a sauna unit with infrared heat, massage therapy, facials, and permanent makeup. Girls' retreat weekends are also offered. For more information, call 715-554-1577 or visit lifesjourneyskinandspa.com.

BALSAM LAKE



<p>Offering:</p> <ul style="list-style-type: none"> • Permanent Cosmetics • Microdermabrasion Facials • Skin Tag Removal • LED/Infrared Therapy • Reiki/Massage • Ionic Foot Baths • Infrared Sauna Sessions Plus MUCH more! 	<p>Skin Classic</p> <p>Non-Laser Removal of:</p> <ul style="list-style-type: none"> • Sun Spots • Age Spots • Keratosis • Broken Capillaries • Skin Tags
---	---

Let an RN Take Care Of The Skin You're In

Call for an Appointment!
 Heather Wendt, RN 715-554-1577
lifesjourneyskinandspa.com


Light Hearted
Wellness

LED/Infrared Therapy

Light Therapy Helps:

- Chronic Pain
- Fibromyalgia
- Traumatic Brain Injury
- Concussion
- Migraines
- Arthritis
- Lyme Disease

**SALT
ROOM**



Balsam Lake

Polk County has any number of lakes, streams, and rivers to try your luck for a lunker or the makings of a fish fry. The 1,901-acre Balsam Lake will reward anglers looking for either of the above, or both.

The lake is known for its largemouth bass. But there are also good populations of northern pike, panfish, and muskie. The state Department of Natural Resources has been stocking the lake to boost the walleye population.

The lake has 65 miles of shoreline and has a maximum depth of 37 feet. It is fed by natural springs and seepage from wetlands on the three shores.

Boat landings are located on the north-west, southwest, and east Balsam.

The lake sees fishing tournaments, both in the warmer months and winter. One of the more popular ones is the Bass Classic Fishing Tournament set for July 18, 2020.





The Polk County Museum is a Fascinating Place to Visit!

The Polk County Museum in Balsam Lake showcases the unique importance of Polk County and beyond through historic and cultural artifacts and exhibits – all providing a fascinating look at our past and housed in a beautiful building built in 1899.

Visitors are invited to discover the historic treasures that fill this former county courthouse, now on the National Register of Historic Places. It's located on Main Street, downtown Balsam Lake. The handicapped-accessible museum also hosts special exhibits throughout its season. Guided tours are available, handicap-accessible entrance on the Northside of the facility, elevator also available; call 715-485-9269 for more information.

The three floors of galleries are full of displays and artifacts that speak to the diversity of cultures and people of the Polk County area. Most of what you'll encounter is from the early 1900s.

Among the fascinating exhibits are the bison bones discovered in the marl dredging pit east of Dresser in Nye and dating back to the Pleistocene Period. The storied logging era has a rightful place in this collection, too.

Adults and children of all ages will be enthralled with the display of a full-size wigwam, Indian art, and many other authentic items on display. Early life in America is rediscovered through a barbershop, country store, and doctor's office with attention given also to clothing, home furnishings, writing, and musical instruments of that era.

The rich diversity of the region is recognized with ethnic exhibits, including those of Danish, Swedish, Norwegian, German, Irish, Scottish, English, and French descendants, as well as Native American.



Built in 1899, the Polk County Museum was the Polk County Courthouse until 1975. The building is on the National Register of Historic Places and is an absolute treasure. You'll find three floors of galleries showcasing items that date back as far as the Revolutionary War!

1st FLOOR GALLERIES

Early Polk County
Native American
Military Room
Logging Room

2nd FLOOR GALLERIES

Life & Time Exhibits
Ethnic Exhibits
Court Rooms
Fine Arts

BASEMENT GALLERIES

1930 Gas Station
Toys
Farm
Jail House

OPEN:

Memorial Day Weekend through Labor Day

HANDICAPPED ACCESSIBLE

AIR CONDITIONED

POLK COUNTY MUSEUM

PRESERVING THE PAST FOR FUTURE GENERATIONS



HOURS

Thursday – Monday
Noon to 4 pm

NO FEE FOR ADMISSION

Donations Appreciated


120 Main Street • Balsam Lake, WI 54810

www.polkcountymuseum.org • Email: info@polkcountymuseum.org

715-485-9269



Find us on Facebook
& Instagram



Let Our Certified Mechanics Handle Your Repair Needs!

AVAILABLE TO RENT:
PADDLE BOARDS
PONTOON BOATS
FISHING BOATS - CABINS

252 COUNTY ROAD I, BALSAM LAKE, WI 54810
715.485.3393
WWW.SUNNYSIDEMARINA.NET

BALSAM LAKE PRO-LAWN INC.
 Nursery • Lawn • Landscape & Floral
Installing and Maintaining Sustainable Landscapes!



916 Badger Dr. Balsam Lake, WI 54810
 715-485-3131 or Toll Free 1-888-374-8894
www.balsamlakeprolawn.com

Balsam Lake PUBLIC LIBRARY

- PUBLIC COMPUTERS & WIFI
- EVENTS FOR ALL AGES
- AND SO MUCH MORE!

Mon-Thurs. 10 - 6
Fri. 10 - 4
Sat. 10 - 1



Where People & Ideas Meet & Connect 404 Main St. • 715 - 485 - 3215
www.BalsamLakePublicLibrary.org   library@balsamlakepl.org

715-485-3210
 Located on Beautiful Balsam Lake



paradiselandingwi.com
 264 County Rd I • Balsam Lake, WI

Bar & Grill • Outdoor Patio • Fine Dining **Private events of all sizes • Catering off-site**



Check out website for events 

Village of *Centuria*

Welcome to *Centuria*

The Village of Centuria is located on Highway 35. Centuria is known for a low tax rate and low utility rates. The village owns an industrial park, with lots available. There is an organized police department and a fire department within the village.

Centuria offers many outdoor opportunities, including parks, pavilions, horseshoe pits, basketball courts, a boat landing, and a picnic area on Long Lake.

Centuria's beautiful park is right off the Gandy Dancer State Trail and has sheltered picnic tables, a playground, the Pomeroy Schnell ball field with concession facilities, lighted horseshoe courts, and bathrooms.

Nearby attractions include a bowling alley, Lamar Community Events, and the St. Croix Valley Raceway.

Recreational opportunities abound in and about Centuria. Part of the Gandy Dancer State Trail goes right through town, offering snowmobiling in the winter and hiking and biking during the other seasons.

Fishing at Long Lake can be accessed by the village-maintained public boat landing, or fish from the dock or shoreline. The area includes a picnic area and restrooms. Great swimming, too.

Featured Centuria events include the Cozy Country Christmas in December. Enjoy snow sculptures, games, hayrides, Santa, crafts, and a flea market. Another popular event is the Baker Orchard Art Festival in September. The artists in the Earth Arts show and sell their fine art in many media. The orchard and Orchard House Gallery are open to the public. There are also hayrides and live music.

Solar Farm in Centuria: Generating Renewable Energy

Polk County, including the Centuria area, has plenty of dairy farms. But Centuria can also boast of having a solar farm!

SunTuria Solar at Polk-Burnett Electric Cooperative in Centuria is now generating clean, renewable energy for co-op members. The 1.25-MW array is the first utility-scale solar in Polk and Burnett counties.

Located behind the co-op office in Centuria, SunTuria Solar covers 10 acres with more than 4,800 solar panels that follow the path of the sun to increase energy production. The array generates approximately 2,363,000 kWh of electricity annually, enough to power about 200 homes.

SunTuria Solar is one of 15 new solar facilities being developed by Dairyland Power Cooperative to diversify generation resources and increase solar energy in Wisconsin.

SunTuria Solar was built and is owned and operated by Chicago-based SoCore Energy on land leased from Polk-Burnett. SoCore's investment is more than \$2 million.

Polk-Burnett and Dairyland Power Cooperative will have no initial investment but have contracted with SoCore to purchase all of the energy output at a fixed rate for 25 years.

Electricity from SunTuria Solar flows into the Sand Lake Substation south of Highway 8 and will be distributed to local members, just the same as if the power had been generated and transmitted from a distant power plant.

As a side benefit, the ground under the array will be restored as prairie to provide bee and butterfly habitat.

Village of **Centuria** Wisconsin

Recreation fun just steps away

The Candy Dancer State Trail conveniently runs through Centuria, allowing you to enjoy the hundreds of miles of snowmobiling access in winter, or biking/hiking in summer. Long Lake provides fishing, swimming, and water activities on its 270 acres. Public boat landing available.

2020 EVENTS

Memory Days

July 9-12, 2020

Baker Orchard Fall Festival

Sept. 26 & 27, 2020

Cozy Country Christmas

December 5, 2020



www.Centuria-wi.org • 715-646-2300 • centuriavillage@lakeland.wi

Welcome to *Amery*

Amery is known as the
city of lakes & trails.

D.D. Kennedy Environmental Area/County Park

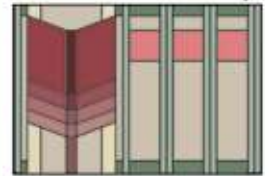
Looking for a scenic area for a picnic or someplace to drop a line? Consider D.D. Kennedy Environmental Area/County Park — a 106-acre preserve along the Balsam Branch that flows through Polk County.

Visitors will find a dam, mill pond, and well-maintained trails. The preserve is listed as a stop on the Great Wisconsin Birding & Nature Trail. The prairie habitat features native grasses and wildflowers, which attract a large variety of birds. Signature species include black-throated green and Canada warblers, blue-headed vireos, and yellow-bellied flycatchers. Interpretive hiking trails, including 1.5 miles of paved trails, weave through the preserve.

Fishing is allowed from the bridge and handicapped accessible pier. The park features a number of amenities including two picnic areas with grills, shelter and modern bathrooms.

For more information, call 715-485-9294. The preserve is located at Kennedy Mill Avenue in Balsam Lake. From St. Croix Falls, travel east 8 miles on Hwy. 8, turn south on Hwy. 65 about 1.5 miles, and turn east on 115th Avenue about 1.5 miles to the park. Watch for the small brown signs.

Amery Area
Public Library



225 Scholl Court • Amery, WI

715-268-9340

AmeryLibrary.org

[facebook.com/AmeryLibrary](https://www.facebook.com/AmeryLibrary)

CREATE ART • GIVE ART • BUY ART

art **Z**
A FINE ART GALLERY

208 KELLER AVENUE • AMERY, WISCONSIN
HOURS: MON-SAT 10-5 PM
715.268.8600
WWW.ARTZGALLERY.ORG

YMCA CAMP
ICAGHOWAN
OFFERS CAMP
PROGRAMS
FOR ALL AGES.

- Summer Camp — ages 7-17
- Outdoor Learning Programs
- Conference & Retreats

Visit us at campicaghowan.org

JANUARY

- 1-31 Art Exhibit @ ArtZ Gallery
- 1 First Hike & Fat Bike @ Amery Parking Lot, 10am
- 10 A Student Art Exhibit @ Northern Lakes Center for the Arts, 7:30pm
- 25 Candlelight Ski @ Soo Line Park, 5:30pm; Fat Bike, 7pm
- 26 St. Joseph's Ice Fishing Contest @ North Twin Lake, 7am-2pm

FEBRUARY

- 1-28 Art Exhibition @ ArtZ Gallery
- 1 Wanderoos Community Club Ice Fishing Contest @ Lake Wapogasset, 8am
- 7 An Art Exhibit Opening @ Northern Lakes Center for the Arts, 7:30pm
- 8 "Love Poems for St. Valentine's Day" @ Northern Lakes Center for the Arts
- 23 Lion's Ice Fishing Contest on Bear Trap Lake, 8am-2pm

MARCH

- 1-31 Art Exhibition @ ArtZ Gallery
- 6 An Art Exhibit Opening @ Northern Center for the Arts, 7:30pm
- 14 "Somethin' for the Wearin' o' the Green" @ Northern Lakes Center for the Arts
- 28-29 MapleFest @ Glenna Farms

APRIL

- 1-30 Art Exhibit @ ArtZ Gallery
- 4 16th Annual Spring Show @ Amery Ice Arena, 9am-4pm
- 4 "A Dramatic Reading" by members of Northern Lakes Center for the Arts
- 11 Annual Easter Egg Hunt @ Soo Line Park, 10am
- 25 Work, Play Earth Day @ Stower Seven Lakes State Trail

MAY

- 1-31 Art Exhibit @ ArtZ Gallery
- 2 PowerUp Family 2K & 5K on Stower Seven Lakes Trail, 8:30am Start

JUNE

- *Every Wed Music in the Park @ Michael Park Pavilion, 6:30pm
- 1-30 Art Exhibition @ ArtZ Gallery
- 6-7 Amery Trail Days and Fly-In
- 13 "Taste of Glenna Farms" @ Glenna Farms, 11am-4pm
- 19 Music on the River - Riverside Hitmen @ Michael Park, 5pm
- 20 Triathlon on Stower Seven Lakes Trail, 9am
- 20 Woman's Club Art Fair @ North Park, 9am-3pm

JULY

- *Every Wed Music in the Park @ Michael Park Pavilion, 6:30pm
- 1-31 Art Exhibition @ ArtZ Gallery
- 3 Giant Ice Cream Sundae @ Soo Line Park, Noon
- 4 Fireworks @ Soldier Field, Dusk
- 4 Wapo-Beartrap 5k Fun Run @ Stower Seven Lakes Trail
- 17 Music on the River & Car Show at Michael Park, 5pm

AUGUST

- *Every Wed Music in the Park @ Michael Park Pavilion, 6:30pm
- 1-31 Art Exhibition @ ArtZ Gallery
- 1 Half Marathon @ 8am

SEPTEMBER

- 1-30 Art Exhibition @ ArtZ Gallery
- 18-20 Fall Festival and Tractor Show
- 19-20 Apple River Quilt Guild Quilt Show @ St. Joseph Catholic Church
- 20 Lion's Club Classic Car and Motorcycle Show 11-2pm

OCTOBER

- 1-31 Art Exhibition @ ArtZ Gallery
- 1-31 Pick your own pumpkins @ Glenna Farms **WEEKENDS ONLY**
- 10 Indianhead Barbershop Chorus "Harvest of Harmony" Amery High School, 2 & 7pm
- 10 Changing Colors Ride/Walk @ Stower Seven Lakes Trail, 1pm

NOVEMBER

- 1-30 Art Exhibition @ ArtZ Gallery Opening November 8th
- 24 Parade of Lights & Light up the Town & Chili Feed at Soo Line Park, 6pm

DECEMBER

- 1-31 Art Exhibition @ ArtZ Gallery
- 5 Holiday Stroll Downtown

* TIMES & EVENTS ARE SUBJECT TO CHANGE *



JUMP INTO

THE CITY OF LAKES & TRAILS

MAKE A SPLASH

LAKES • FISHING • RIVERS • TRAILS
MUSIC • ART • WALKS • ATV

AMERY

Known as the "City of Lakes and Trails," Amery presents a complete recreation picture for those seeking a vacation destination no matter the season.

The rural town has a population of nearly 3,000 and has a downtown commercial area and industrial area. A robust retail community and ample services will meet all your needs for a day visit or extended stay.

Its popularity with visitors is due in part that it's just an hour's drive from Minneapolis, MN. Once here, they can take to the city's three lakes (South Twin, North Twin, and Pike) for scenic pontoon tours or to fish for one of the several game fish species. Canoeing and kayaking the lakes and rivers round out the memorable trips.

Visitors can also enjoy the city's 13 public parks and other public land that provide opportunities for families to pursue outdoor recreation activities, including ATVing, disc golf, camping, and the Stower Seven Lakes State Trail.

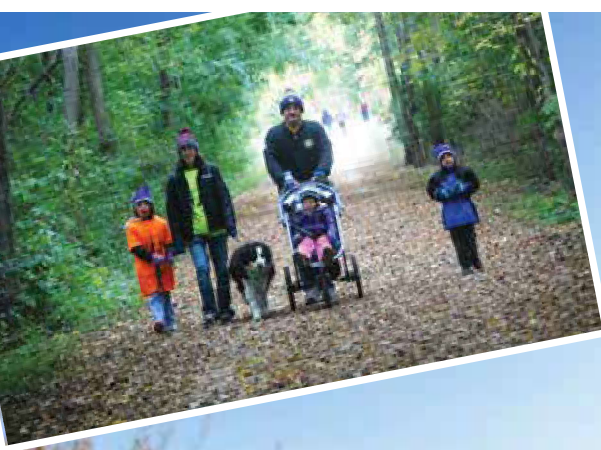
The Amery Golf Club is a mature 18-hole course with a scenic layout and four sets of tees to challenge golfers of all ages and abilities.

Leaving summer, it's time to enjoy the autumn fall master piece known as "Colorama." Fall leaf color is at its most breathtaking in a landscape of rolling ridges and lush forests.

And when the winter snows begin to drift across this glacier-carved landscape, the entire region becomes a sparkling white playground for skiers, fishermen, snowmobilers, and snowshoers.

Amery was voted one of the charming "art towns" with 2 galleries and many private studios. Seasonal festivals and hometown values make this a friendly town to enjoy and to grow your family.

www.amerywisconsin.org



Biking & Hiking in Amery

The forest, farms, rivers, and lakes of Amery provide a remarkable setting for its trails. Stower Seven Lakes State Trail is a 14-mile trail built on a former railroad corridor. It runs from Harman Avenue in Amery to 90th Avenue, approximately 1 mile from Dresser. This trail is groomed for cross-country skiing. ATVs, snowmobiles, and other motorized vehicles are prohibited on this trail. Other hiking and biking trails in Amery are the walking trail at the Amery Regional Medical Center, and the York Park Wailing Trail, and the School District of Amery School Forest Trails.



Soo Line Park

Located right in the center of Amery is Soo Line Park, which features the vibrant, red Amery Trailhead Pavilion that is home to the weekly farmer's market, held every Monday throughout the summer months, as well as numerous other events throughout the year. Soo Line Park also serves as the starting point of the scenic Stower Seven Lakes State Trail. Amenities at Soo Line Park include picnic tables and benches and free Wi-Fi access. Restrooms are available at nearby City Hall when the building is open and during events.



**Amery
Meat
Market**

Fresh Steaks

Ground Beef

Bacon

Marinated
Chicken Breasts

Brats

Mon thru Fri 8:30am– 6pm; Sat 8:00am - noon
116 Central Ave., Amery, WI
(715) 268-7515
www.amerymeatmarket.com

Amery Rustic Roads

The Wisconsin Rustic Roads System comprises scenic, lightly traveled country roads throughout the state. You can find two designated rustic roads in Amery that offer a peaceful country drive:

Rustic Road 28: Mains Crossing (old Highway 8). This route passes by Apple River Park and the picturesque Apple River. Along this route, travelers will find pleasant views of deciduous forests, open farmland, three small churches, two cemeteries, and the Apple River Town Hall.

Rustic Road 41: Clara Lake Road between County Highways E and G. The road meanders past bucolic farmland, woodland, and the historic Hunkey Dory Resort.



Apples- Honey - Maple Syrup - Pumpkins
All locally grown and harvested in the St. Croix River Valley



COME VISIT Z-ORCHARD!
Located at the corner of Cty Rd "C" and "F" west of beautiful Amery, Wisconsin

AMERY, WI

For hours and special events find us online:
Z-Orchard.com or on Facebook 715.268.8650

Dragonfly Gardens



Annuals
Vegetables
Trees & Shrubs
Herbs
Perennials
Native
Wildflowers
Much More!

Amazing Variety • Expert Advice
Everything you need for your garden!

715-268-7660
491 Hwy 46 S
Amery, WI 54001
www.dragonflygardens.net

Park LAKES & LAND Realty



638 Keller Avenue South
Amery, WI 54001

715-268-9442
parklake@amerytel.net

R
www.park-realty.com

CHET JOHNSON DRUG

Healthcare Services & Everyday Needs
from People You Know

715-268-8121 • chetjohnsondrug.com
204 N. Keller • Amery, WI 54001

ELLIE'S



Specializing in
Old-Fashioned
Ice Cream Treats

OPEN DAILY
715-268-3470

Fresh Ground Espresso Drinks & Gourmet Coffee

elliesicecream.com
204 N. Keller • Amery, WI 54001



Village of *Clayton*

Welcome to *Clayton*

The Village of Clayton is located on Hwy. 63 in the southeast corner of Polk County. Incorporated in 1909, Clayton has a population of 547 (2000 Census). The village is located within the Town of Clayton. According to the U.S. Census Bureau, the village has a total area of 3.2 square miles, of which 3.1 square miles are land and 0.1 square mile is water.

The Village of Clayton hosts a variety of opportunities within its community and the surrounding area. As the "Home of the Bears," the Clayton School District is nestled in this small community about one-hour northeast of Minneapolis. It is comprised of a 4K-12 school building with approximately 400 students and 47 certified staff members.

The Clayton School District has an excellent staff who cares a great deal about the students' intellectual, emotional, and physical development. The primary mission of the staff members is to help students develop the necessary skills and strategies to be confident lifelong learners and to be productive in a global world.

The Clayton Village Board is very proactive to opportunity. Industry, manufacturing, retail, and commercial businesses are located throughout the area. The vision statement of the Village of Clayton is "To enhance small-town atmosphere and continue to provide updated, quality services to support growth and opportunities."

A recent large addition to the wastewater treatment plant provides modern utilities for residents using the water and sewer department's services. An active industrial park and TIF district encourages development and is available for businesses looking for a place to grow.

Clayton is located amongst various recreational activities in the area too. ATV and snowmobile trails thread through the area, with maps available locally. Lake Camelia, Lake Magnor, and Moon Lake have a mix of public boat landings, picnic areas, and public docks.

Community History

Like most communities in northwestern Wisconsin, loggers were the first settlers in Clayton. They found the greatest stand of white pine trees in the world waiting to be harvested. In 1874, the railroad arrived, making its way northward through many logging camps including Clear Lake, Summit, Pineville, and Richardson. The end of the line was at the large sawmill located at what is now called Lake Camelia on the western edge of the Village of Clayton. The lumber company, Humbird and Rogers, operated the mill and owned most of the land surrounding Clayton.

Clayton Rogers was the boss of the mill and reputed to be an excellent manager and capable of the work of 10 men. Mr. Rogers was a veteran of the Union Army in the War Between the States.

He was an officer of the 6th Wisconsin, which was one of the divisions of the famous "Iron Brigade." He was in many battles, including the Battle of Gettysburg in which he performed invaluable services. On the first day of the battle, his delaying action against the Confederate forces enabled the Union Army of the Potomac to march to Gettysburg and participate in the battle. In recognition of Clayton Rogers's great accomplishments, the village was given his first name.

Another notable pioneer of the village was Worthy Prentice, also a Civil War veteran. Mr. Prentice was a surveyor who mapped out the village. He lived in Clayton most of his life. The main street through the village is named Prentice Street after him.

Dairy Industry

Following the lumbering era, Scandinavian, German, and Russian families settled the area and eventually went into dairy farming. The area became known for many small creameries and cheese factories. The Clayton Cooperative Creamery was purchased by Stella Cheese Company in the 1930s and became a producer of fancy Italian cheese, which was shipped throughout the entire nation.

During the 1960s, the factory produced blue cheese and became the largest producer of blue cheese, in not only the nation but also the world. The Clayton Lions Club promoted the Village by proclaiming it "The Blue Cheese Capital of the World." The Wisconsin Dairies Cooperative purchased the cheese factory during the 1980s. Today it is known as Foremost Farms and is a producer of pizza cheese for our country's most popular fast food.

Strong Educational Traditions

The first school in Clayton was established in 1876. In 1914, the school included a four-year high school and was headed by F.M. Robey, who was the principal of the school for 50 years, retiring in 1964. The Clayton School in 2000 dedicated its second major addition in 10 years. Clayton residents are very proud of the excellent school system and have always been supportive of exceptional facilities and programs for area youth.

Community Events

Year-round recreational activities take place in Clayton and its surrounding area. Richardson Sportsmen Club celebrates our winter season with its annual Ice Fishing Contest on Lake Magnor in February.

We celebrate our annual town festival, Clayton Cheese Days, every summer over Father's Day weekend in June. The feature of the weekend is the availability of the community's original festival highlight, the blue cheese burger. The end of June sees the local Ricketty Chickety group's sale of a collection of eclectic, historical, and repurposed items for viewing and purchasing.

Labor Day is busy for the Clayton Fire Department, which sponsors a Tractor and Truck Pull event for the benefit of a local child or family with a young child or children.

Fall sees our area churches active with community eats and treats, including the Holy Trinity Orthodox Church's annual Harvest Festival, Faith Lutheran Church's fall dinner, Immanuel Lutheran Church's cabbage roll dinner, Moe Lutheran Church's lutefisk dinner, and Silver Creek Lutheran Church's soup and sandwich.

For more information and specifics on area events, please contact Village of Clayton office at 715-948-2460, or visit villageofclaytonwi.com.



2020 EVENTS:
Feb 16th - 59th Annual Ice Fishing Contest
Jun 6th - Special Needs Fishing Day
Aug 8th - 7th Annual Youth in the Outdoors Day
TBD - 100/50 Bird Shoot - Lewis Class Payout

Club Meetings on the 2nd Thursday of each month at 7pm

Sportsmen Club for Trap Shooting, Archery, Fishing, Hunting, Outdoor sports and Youth involvement. Gun and Archery Range that is open to the public.

853 20th Street | Clayton, WI 54004 | Find us on 



Planning Designs & Construction

Experience the Berghammer Difference



Serving Wisconsin and Minnesota
715-948-2811
www.berghammerbuilders.com



Clayton Cheese Days Demo Derby
June 19-21, 2020



Moon Lake Threshing Bee
August 15-16, 2020

Look for the Lions Foodstand!

Events sponsored by Clayton Lions Club
 Find us on facebook: [claytonlionswisconsin](https://www.facebook.com/claytonlionswisconsin)

CORBA Trail System Welcomes *Silver Creek Springs Trails*

Adventure awaits those who set forth on the mountain bike trails located on Silver Creek Springs bicycle farm. Its trails are now officially part of the Chippewa Off Road Bike Association (CORBA) trail system.

Silver Creek Trails are located in the Barron County Forest, Silver Creek Unit, a half mile from the corner of 5th Street & 6th Ave., just 6 miles east of Clayton.

These trails are primitive, intermediate/advanced single track. City bike paths are wonderful, but these trails are meant to be ridden with the forest as your sole landscape and your soul in harmony with nature.

Tony and Lisa LeCuyer Kofakis, both bicycle enthusiasts at heart, own Silver Creek Springs. In fact, Tony at one time was racing BMX professionally.

Located on the farm is The Creeky Wheel, a full-service bicycle shop where you can have your bike repaired, if necessary, and tuned. The boutique bike builders specialize in enduro, trail, and fat bike custom builds. They are an authorized dealer for Fatback Bikes, an Alaskan fat tire mountain bike brand, and also Foes Racing USA, 100% handcrafted USA bicycle frames. Rental bikes are also available.

In addition, they offer Silver Creek Skin Care products, as well as retreats, workshops and event hosting. For more information, call 715-948-2110 or visit online at www.silvercreeksprings.com. They are located at 594 4 1/2 Street, Clayton.



HOURS
Mon-Fri: 5am-10pm
Sat-Sun: 6am-10pm

DNR Services • Lottery
Gas • Propane • Liquor
Beer • Groceries • Pizza
24 Hour Pay at the Pump

110 Hwy 63 • Clayton, WI 54004



VILLAGE OF *Clayton*

2020 CALENDAR

- Jan. 25** Richardson Sportsmen Club
5th Annual Predator Hunt
- Feb. 2** 59th Annual Ice Fishing Contest
on Lake Magnor
- June 12-13** Rickety Chickety Occasional Sale
- June 19-20** Truck & Tractor Pull
- June 19-21** 54th Annual Clayton Cheese Days
- June 21** Clayton Lions Club Demo Derby
- Aug. 4** Community National Night Out
- Aug. 8** Youth in the Outdoors
- Aug. 15-16** 35th Annual Moon Lake Threshing Bee
- Sept. 5** Clayton Fire Department
Truck/Tractor Benefit Pull
- Sept. 20** Holy Trinity Orthodox Church
Cabbage Roll Dinner
- Oct. 18** Moe Lutheran Church Lutefisk Dinner
- Nov. 1** Silver Creek Lutheran Church
Soup & Sandwich Luncheon
- Dec. 3** Clayton Community Tree Lighting

111 Clayton Ave. W • P.O. Box 63 • Clayton, WI 54004
715-948-2460 • www.villageofclaytonwi.com



Clear Lake

Wisconsin

Village of *Clear Lake*

CLEAR LAKE

Welcome to *Clear Lake*

The village of Clear Lake in the southeastern section of Polk County is named after the lake that lies about a half mile from town. The water in the lake is supplied from living springs, which makes for good fishing and swimming. The lake is part of a 260-acre park that has a playground, shelters, picnic sites, modern campsites, an archery course, a horseshoe court, and a softball field. The village of Clear Lake has a nine-hole golf course with dining facilities and is the trailhead for a multi-use trail for recreational vehicles, snowmobiles, biking, walking and cross-country skiing.

Main Street is occupied by several small businesses including many restaurants and bars. Professional services include a medical clinic, veterinarian, optometrist, chiropractors, massage therapist, and funeral director. Clear Lake also has a grocery store, hardware store, car wash, auto repair shops, and a public library. The industrial park and main street both offer an opportunity for new businesses or expansion of existing businesses.

For more information, contact:

Clear Lake Village Office: 715-263-2157

Clear Lake Public Library: 715-263-2802

Email: clearlakelib@clearlakelibrary.org



Clear Lake Earth Day Celebration

On April 18, 2020, we will celebrate the 50th Anniversary of Earth Day at the Gaylord A. Nelson Education Center/Clear Lake Elementary School. The first event was held in 2017. The event honors the environmental legacy of Gaylord A. Nelson. He was born and raised in Clear Lake and received much of his inspiration for establishing Earth Day from the beauty in Clear Lake and the surrounding area. The event begins with a healthy, local, and organic breakfast. At past events, we have had speakers on environmental topics, healthy food, raising bees, and solar energy. There are also displays from various groups such as Trout Unlimited, organic gardeners, local environmental non-profits, the Clear Lake library, a primitive bow maker, a fly rod builder, and more. The 2020 event will have a NIBI walk on the Willow River, which begins in Clear Lake. There will be earth-related storytelling by a native of Clear Lake and much, much more! Come and have fun learning about our environment and the many things we can do to make this earth a healthier place for all! We hope to see you at the event. You can find more information on Facebook @clearlakeearthdaycelebration and Instagram @clearlakeearthday.

Fireworks

Each year on New Year's Eve, the Clear Lake Community Club presents a night of fun for the family, ringing in the New Year with a Fireworks celebration! We celebrated our 10-year anniversary in 2017, and the event continues to grow each year. The festivities start at 4:00pm with sledding for the kids, a bonfire and s'mores, skating on the lake (weather permitting), and food galore! The main event kicks off at 7:00pm. Some people stay out by the hill and watch fireworks from there, and others just come and park to watch the festivities. There is something special about the way the fireworks glisten when bouncing off the snow covered ground in the winter.

We hope you come to see what Clear Lake has to offer. You can find us at the crossroads of heritage and progress!



**Senator
Gaylord Nelson**

Clear Lake's Founder of Earth Day

Gaylord Nelson was born in Clear Lake in 1916, the son of the local doctor. After graduating from Clear Lake High School in 1934 and the University of Wisconsin Law School in 1942, he fought in the Pacific Theatre during World War II. He served in the Wisconsin State Senate from 1948 to 1958, when he was elected governor. He later served as U.S. Senator from Wisconsin from 1962 through 1980. Nelson was an advocate of conservation since his earliest days in politics. He created Earth Day in 1970 as a way to heighten awareness of conservation and environmental concerns.

Information on Gaylord Nelson is available at the Clear Lake Historical Museum, Polk County Museum, and libraries throughout the county.

Save Our EARTH. Go Green.

Calendar of Events

104th Annual Fireman's
Oyster & Chili Feed:

Saturday, January 18th
Community Center



Easter Egg Hunt:

Saturday, April 4th,
Starting at 9:30 am
First Lutheran Church



Kick-Off to Summer &
Ice Cream Party:

Saturday, June 6th
Clear Lake Park



Clear Lake Heritage
Days:

Thursday, June 25th –
Sunday, June 28th
Main Street CL



Progressive Holiday
Stroll:

First Weekend of December
Main Street CL



Santa Day:

First Weekend of December
Clear Lake Area Community
Center



New Year's Eve

Fireworks:

Thursday, December 31th
Clear Lake Park Chalet



Clear Lake Museum Celebrates Hometown Heroes

Including Baseball Hall-of-Famer & U.S. Senator



What do a famous U.S. Senator and a baseball legend have in common? Find out with a visit to the Clear Lake Historic Museum, where special exhibits honor both native sons of Clear Lake.

The extensive history of Clear Lake (established in 1875), as well as Polk County and western Wisconsin, is woven in a tapestry of collections and priceless artifacts housed in the Clear Lake Historic Museum, located at 450 5th Avenue.

The museum resides in a three-story building built in 1912 as the community's first high school. It served as an elementary school in its later years. In 1977, the school board agreed to lease the building to the museum board for \$1 a year. When the district built a new high school in 1997, it sold the 1912 building to the museum board for another buck! Today, the museum is a destination venue for baseball enthusiasts, veterans and military history buffs, and those interested in environmental issues.

The building has three levels and 10 display rooms. Two rooms are dedicated to Clear Lake's famed residents: U.S. Senator (and Wisconsin governor) Gaylord Nelson and Baseball Hall-of-Famer Burleigh Grimes. The founder of Earth Day and the last World Series winning pitcher to legally throw a spitball were both charter members of the museum. Senator Nelson designated the muse-

um as the place to house an impressive collection of his Senate memorabilia. Congressional records, numerous awards, letters from dignitaries, photos, and his chair are included in the collection. After winning 270 games and pitching in four World Series over the course of his 19-year career, Burleigh Grimes also designated the museum to house his cherished possessions. His Hall of Fame ring can be viewed upon request.

Other exhibits in the museum showcase Clear Lake's rich history. The Farm and Creamery Room features the rich agricultural history of this region of Wisconsin. A suite of rooms display military uniforms, flags, and the history of men and women who served our country in times of war and peace. The schoolroom attracts visitors who want to show their class pictures to their children, grandchildren, or other curious family members. Class pictures, diplomas, banners, athletic awards, school clubs, and classroom memorabilia decorate this room. Other areas depict what the interior of a home and a small-town Main Street might have looked like at the turn of the 20th century.

The museum has always had tremendous community support. It has never received any tax dollars from the village, county, or surrounding areas and performs improvements and maintenance as funds allow.

Lest We Forget



Visit an All Veterans' Memorial honoring over 2,100 Clear Lake Area Veterans dating from the War of 1812 to present time. Within the Veterans' Memorial is an authorized Wisconsin Historical Society marker paying tribute to the only known National Anthem/Bounty Land Monument in the United States.

Nearby is the Clear Lake Museum, which has over 20 mannequins fully dressed in military uniforms worn during those war times. Also featured are countless other military artifacts ranging from Civil War to Iraqi/Afghanistan conflicts.



Clear Lake Businesses

Visit Our Local Businesses!



BEHIND EVERY PROJECT IS A
True Value.

For all your hardware needs!

Maytag Appliances

Hunting &

Fishing Supplies

Clear Lake True Value

(715) 263-2375

530 Third Ave. N.W.

Clear Lake, WI 54005



Find us on Facebook 715-263-2233

www.clearlakecommunitycenter.webs.com

Nilssen's Market

Home Of Nilssen's
Blue Ribbon Meats



Serving The Community Since 1903 Clear Lake 263-2513

MAKEPEACE MARINE

and Auto Body

Collision Repair • Fiberglass & Gelcoat Repair
Wakeboard Towers Installed & Painted

598 60TH AVENUE CLEAR LAKE, WI 54005

952-484-7484 GPROTEAUX@GMAIL.COM

Clear Lake GOLF CLUB

100 Golf Drive
Clear Lake, WI 54005

(715) 263-2500



Any Season. Any Speed.

We've got what you need.



For All Your
Water and
Powersport
Needs.

NEXTGEN
POWERSPORTS

NEXTGEN
WATERSPORTS

235 U.S. Hwy. 63 Clear Lake
715-263-2295

www.NextGen-Companies.com

CLEAR LAKE

Welcome to *Cushing*



Gandy Dancer State Trail Serves Many Recreational Users

Mileage between towns along the Gandy Dancer State Trail:

St. Croix Falls to Centuria	4.5 Miles
Centuria to Milltown	6.2 Miles
Milltown to Luck	3.7 Miles
Luck to Frederic	6.1 Miles
Frederic to Lewis	5.4 Miles
Lewis to Siren	5.7 Miles
Siren to Webster	6.6 Miles
Webster to Danbury	8.9 Miles

The Gandy Dancer State Trail has two sections, each with different uses allowed. The northern section, from Superior to Danbury, is a gravel trail open year-round to both motorized and non-motorized use. The crushed limestone southern section, from Danbury to St. Croix Falls, is non-motorized in the summer for hiking and biking and motorized in the winter for snowmobiling and frozen ground ATV/UTV use.

This 98-mile recreational trail follows the old Minneapolis, St. Paul, and Sault Ste. Marie railroad grade from St. Croix Falls north to Superior. This grade was commercially used for approximately 100 years, starting in the late 1880s. The entire Gandy Dancer State Trail is marked with milepost signs.

Railroad history is remembered in the name "Gandy Dancer." Hand crews, who built and maintained the tracks, used railroad tools manufactured by the Chicago-based Gandy Tool Company. Often the crews used vocal and mechanical cadences to synchronize the swinging of their hand tools or the movement of their feet. Hence, the name "Gandy Dancer" reminds us of the past crews who built the railroads.

The southern half of the Gandy Dancer State Trail is 47 miles long and begins at St. Croix Falls and passes through Centuria, Milltown, Luck, Frederic, and Lewis. The short distances between these towns makes the Gandy Dancer State Trail the most user-friendly trail in the Midwest with easy access for food, lodging, parking, and other areas to explore.

This segment was surfaced with crushed limestone in 1995 and offers a smooth, hard-surfaced trail with use limited to biking and hiking from April through November. A state trail pass is required of all bicyclists 16 years of age or older riding the Gandy Dancer State Trail between St. Croix Falls and Danbury. A Wisconsin Department of Natural Resources Conservation Patron license will be honored as a bike pass.

Trail passes are available at the Polk and Burnett County Tourism Centers and from business vendors located in communities along the Trail. Pass fees are \$5 for a daily pass and \$25 for an annual pass. Trail passes are issued to individuals, not bikes. As such trail passes cannot be passed from person to person or shared with others.

This segment in Polk County is also open for frozen-ground ATV/UTV use. Please stay off side trails, as they are not open to ATV/UTVs. An ATV or UTV operated on a public trail or corridor needs to display a valid Wisconsin public use registration or needs to display a valid non-resident ATV or UTV trail pass. The Polk County Information Center in St. Croix Falls offers information on the many attractions along the trail as well as in the county.

DUGOUT BAR & GRILL

2491 240TH STREET | CUSHING, WI 54006

DAILY SPECIALS
TUESDAYS \$1 TACOS

HAPPY HOUR:
MON-THURS: 4-6

**SPONSOR OF FASTPITCH,
POOL, BOWLING &
TRAP SHOOTING**



DUGOUTBAR@LAKELAND.WS
715-648-5275



Welcome to
Dresser

Trollhaugen Outdoor Recreation Area

Established in 1950, Trollhaugen Outdoor Recreation Area, 2232 100th Ave, Dresser, is one of the longest-running snow sports resorts in the Midwest. It offers skiing and snowboarding on 23 runs, along with four terrain parks, 10 lanes of snow tubing, and an all-season zip line park.

They have 100 percent snowmaking capabilities. The runs are groomed on a regular basis. They also offer night skiing.

The vertical drop is 260 feet with the longest run at 2,500 feet. There are 90 acres of skiable terrain with 28 percent classified as advanced, 43 percent intermediate, and 29 percent beginner.

If you like sledding, you will love snow tubing. Experience the thrill of sliding down a snowy run and then effortlessly riding a moving sidewalk back up. Tubes are provided, and a conveyor surface lift is available to ride up the hill. The 10 different lanes offer varied levels of rollers and pitch. No experience or special equipment is needed. Just hop in the tube and enjoy the ride.

The professional ski instructors at Trollhaugen's Ski/Snowboard School's offer group, semi-private, and private lessons.

Trollhaugen's Adventure Park is an aerial challenge course and zipline park tour. The park provides the thrill of playing on a giant, floating playground. Imagine climbing trees, hanging from tires, and swinging on ropes just like when you were a kid, but on a far bigger scale and in a more creative environment, with the backup support of world-class safety equipment.

The aerial challenge course is an extremely fun experience offering seven different circuits and five levels of difficulty – so everyone can enjoy a challenging outdoor adventure, spring through fall. The zipline tour offers six ziplines across multiple platforms, and also features a dual-zip for tandem thrills with a friend.

For information about tickets, lessons, and hours, visit trollhaugen.com or call 651-433-5141 or 715-755-2955.

DRESSER

WINTER FUN



CREAT SNOW!
100% Snowmaking
Race League & Teams



SICK TERRAIN PARKS
Refill, Jump & Events

NEW! Snowmaking Machine!

Trollhaugen

OUTDOOR RECREATION AREA

SUMMER ADVENTURES



AERIAL ADVENTURE PARK
112 Element Challenge Course



3000 Ft of Zip Lines
Over 60 feet up! Up to 35mph

SKI & RIDE 'TIL 3AM FRIDAYS
Only \$20 After 9pm



LIVE MUSIC EVERY WINTER FRIDAY NIGHT
Local and Twin Cities Favorites

TUBING PARTIES



FAMILY FUN
Ski/Snowboard Lessons for 3+



Facebook icon "Like" The Troll • facebook.com/trollhaugen for weekly give-aways

2232 100th Ave. | Dresser | Wisconsin | 715.755.2955 | Trollhaugen.com

Welcome to *Frederic*

Celebrate the Seasons in *Frederic*



Julie Adams



Art, Fine Craft and Gifts

110 Wisconsin Ave N, Frederic, WI

One 10 Gallery.com

Frederic is a wonderful place for someone raising a family, for a person wishing to retire or for the young entrepreneur.

There are lots of fun things to see and do in Frederic. Lakes are nearby or within an easy drive for fishing and boating along with beaches and parks to work on a summer tan or for the kids to swing and slide.

Winter activities include snowmobiling, ice skating on the public rink, cross-country skiing, and ice fishing. The Trade River Trail offers 8 km of groomed trails; the Coon Lake Trail has 5.3 km of ungroomed trails. The "big feet" crowd may want to try the Somers Lake Trail, where there are three wooded loops totaling almost five miles for snowshoeing.

Trails in the warmer months to try include the Gandy Dancer State Trail and the Ice Age National Scenic Trail.

Popular community events include Frederic Family Days, Indianhead Gem & Mineral Show, the farmers market, and Winter Fun Day.

Winter Fun Day held each January includes a fishing contest, snow sculpting, hockey, and a garage sale at the elementary school.

July brightens with shiny objects at the Gem & Mineral Show at the Frederic High School. Local rockhounds display their remarkable finds and rock art. Vendors use rocks and gems to make jewelry and display items for sale.

Frederic Family Days, also in June, celebrate with sidewalk sales, softball tournaments, talent contest, a parade, concessions, and fireworks. Another June festival is the annual Frederic Arts Festival, where local and regional artists display and sell their works of art.

My Alpaca Store & Fiber Studio

You may not be in the market for an Armani suit made from Suri alpaca fleece, but My Alpaca Store & Fiber Studio in Frederic has yarn for making your own creations, and clothing from scarves to sweaters made from Alpaca fleece that's perfect for gift giving.



The owners pride themselves in offering some of the finest handcrafted alpaca clothing and gifts offered for sale at reasonable prices. The items are home grown and handmade from the animals they lovingly have been raising on their northern Wisconsin farm since 2005.

Alpaca fleece comes in at least 22 different variations of natural colors. This opens up the door to a world of renewable resource, which can provide beautiful, natural, non-chemical, un-dyed, and non-fading fleece products such as yarns and knitted and woven items. Alpacas are not harmed to get their wool.

The store's menagerie of products include wool from angora rabbits; natural products from peacocks, such as peacock feather jewelry; hand-painted genuine goose egg ornaments; and bath and soap products.

The store is located at 101 Oak Street E; call 715-557-1912 or visit myalpacastore.com.

FREDERIC HARDWARE

"For all your hardware needs!"

Downtown Frederic
106 Oak St W

715-327-5664

FREDERIC GROCERY

120 Oak St. West
Frederic, WI 54837



715.327.4855

\$5 CHEESEBURGER BASKET
(Cheeseburger + Side of Seasoned Fries)
We Use Daefler's Quality Meats
*w/ Drink Purchase
SKOL BAR AND GRILL
skolbarfrederic.com

Serving Breakfast, Lunch and Dinner!

Daily Happy Hour and Open Late!

Conveniently Located Right Off Gandy Dancer Snowmobile Trail!

SKOL BAR AND GRILL
135 Oak St W, Frederic, WI
(715) 327-9979
www.skolbarfrederic.com

My Alpaca Store & Fiber Studio

Home Grown & Hand Made

Yarn, Clothing, Gifts & Supplies

Hand Spun Yarn • Knit, Woven & Felted Items

Raw Fiber, Batts & Rovings
including alpaca, angora rabbit, mohair

Knitting & Felting Supplies

Natural Fibers, Feathers & other
homegrown farm goodies - locally grown

Hand-made Soaps & Bath Products
(Scented with essential oils - no artificial scents or colors)



101 Oak Street E. | Frederic WI 54837
715-557-1912 | www.myalpacastore.com



photo © William Johnson

The Rose Garden
Floral & Greenhouse

Fresh Flowers & Plants
Gifts, Home Decor & More
Spring Garden Center

Complete Weddings
Flowers • Tuxedo Rentals
Linen Rental

308 Wisconsin Ave S. • Frederic
715-327-4281
www.therosegardenfrederic.com

DAEFFLER'S
QUALITY MEATS
FREDERIC, WI

Fresh Meats • Award-Winning Bacon
Locker Rental • Custom Processing
Our Own Smoked Ham & Sausage
State-Inspected Slaughtering
Ph: 715-327-4456 • Fax: 715-327-4457

315 Oak St • P.O. Box 248 • Frederic, WI 54837

Mud Hut
Gifts & Crafts

Stamps, Scrapbook, Yarn & Art Supplies
Stocking a huge selection of
items for the craft enthusiast

Classes by Appointment
OPEN ALL YEAR
Mon-Fri: 10-6 • Sat: 10-5
114 W. Oak St
Frederic, WI 54837
www.MudHutGifts.com
715-327-8903

How Do You Craft a Log Cabin?

Find out at the Frederic Museum

No man was better at crafting a log cabin with an axe than Syver Torkelson, an immigrant from Norway, whose expert craftsmanship is reflected in one of the log cabins that now resides at the Frederic Museum in Frederic.

Torkelson used a hand axe to cut and shape all of the logs for a new cabin for his son Edward. He built it on a farm about one mile north of Cushing. In later years, abandoned and exposed to the punishing elements, the cabin fell into disrepair. To the rescue came George Sornson, a former Cushing resident, who purchased the cabin and relocated it to a site on Wolf Creek.

After spending many weekends over the course of two decades, he restored the cabin to its original condition. He donated the cabin to the Frederic Area Historical Society in 2003 so that it would be preserved and enjoyed by future generations of local residents and visitors. The Society moved the cabin the following year to a site adjacent to the depot/museum and the old library building.

That's where you can find it today, along with a number of other interesting and fascinating displays, including a Soo Line caboose, decked out in bright red and white colors. There's a display of cooper tools inside the depot/museum. Such tools were used by tradesmen called "coopers," who created the ends (headers) of casks and barrels, which then were shipped by train to barrel manufacturers.

The original Frederic Depot was built in 1901 for a sum of \$1,525. Passenger service through Frederic ended on June 25, 1961, and scheduled freight service ended in 1980. The Soo Line Depot building was erected in 1901 and served the village and surrounding area until 1982.

The depot was renovated in the early 1990s and was converted into a museum. In 2003, the depot was listed in the National Registry of Historic Places. Since the museum opened in 1997, several additions to the depot have been made.

The depot/museum is open on weekends from Memorial Day weekend through "leaf season" of each year. Hours are 11:00am to 4:00pm and other times by appointment for groups. Tour guides are on duty. To make an appointment, call 715-327-4158.



In the land of summer lake cabins, back roads, and zero traffic snarls is the Village of Frederic, WI, just an hour and a half from the Twin Cities. Over 40 acres of public parklands, a 20-acre lake with public access, docks, shelters, ballpark, basketball court, a newly completed hiking trail, and more – all available for family outings, special events, or just peaceful afternoon picnics.

Frederic also boasts a flourishing arts and cultural community. In 2000, the community dedicated the renovated original Soo Line depot as the Frederic Area Museum and then renovated the old theater building turning it into a new 6,000-square-foot public library. In 2018, Frederic Arts celebrated nine years of community arts programming.

2020 Events

Jan 25th - Coon Lake Classic
TBD - EarthArts Spring Art Tour
June 20th-21st - Family Days
Aug 15th - Frederic Festival
TBD - Knitting Extravaganza
TBD - Annual Halloween Party
TBD - Christmas in Frederic/Santa

FREDERIC



Frederic

A Beautiful Place to Visit, A Great Place to Live!

www.FredericWI.com • 715-327-4294

Welcome to
Luck



Discover Luck: Come for the Beauty, Stay for the Fun

LUCK

Luck is a progressive community, with an emphasis on small-town life. We're proud of our excellent schools, library, museum, locally owned stores, lodging facilities, restaurants (fine and casual dining), pubs, and nightlife. Come see our Main Street renovated in 2018 with new sidewalks, streets, and lighting. Our scenic beauty is abundant, and we offer lots of recreational opportunities and events for all four seasons.

Start spring afresh with a visit to Luck for a hike or bike. Candidates include the Ice Age National Scenic Trail, Straight Lake State Park, and the Gandy Dancer State Trail. ATVers can access all county roads. Some of your most unforgettable golfing will be spent on Luck's Golf Course. Nestled along the shore of Big Butternut Lake, the 18-hole course weaves through pristine pines, hardwood forest, and rolling countryside.

Summertime is playtime on Big Butternut Lake, where you can camp, fish, swim, and watch the sunset light up the sky. When you're hungry, guide your boat to the dock at the golf course, and sample their food and drink. July brings our memorable Lucky Days

Festival – offering entertaining bed races, spirited softball games, a nifty parade, and one of the best classic car shows to be found anywhere.

Embrace autumn with a visit to Luck's countryside to see Mother Nature's spectacular fall colors. Our popular Gandy Dancer State Trail Marathon is a sure winner for those looking for a personal best or for a Boston Marathon qualifier time.

Wintertime opens the doors to abundant outdoor activities: snowmobiling on nicely groomed trails; cross-country skiing on scenic trails under snow-laden pine boughs, ice-skating on ponds and rinks, and ice fishing.

Our merchants welcome you to their unique and friendly shops throughout the year, but especially for the Holiday Experience in December. Watch the kids' eyes light up when they see Santa's Workshop and tree-lighting ceremony!

The Luck Winter Carnival arrives in February, featuring an amazing lighted ice castle, fireworks, royalty pageant, dazzling torchlight parade, and much more for the entire family.

Year-round you can visit our impressive museum/library, taking you back in time to learn Luck's rich history. According to local folklore, loggers on their way to the St. Croix River were lucky to make it to the big hotel on Big Butternut Lake before sundown. Those who did had put in a long day and were "in luck!" – hence, our name.

Luck
Do it Best
Hardware

Hours:
Mon-Fri: 8am-5:30pm
Sat: 8am-1:30pm
Sun: closed

Heidi A. Nelson
715-472-2089
110 Main Street, Luck WI 54853
P.O. Box 187

Luck Public Library
301 South Main Street • Luck, WI 54853
LuckPublicLibrary.org

HOURS
Monday-Thursday
11am - 7pm
Friday
11am - 5pm
Saturday
10am - 1pm

RED MAPLE
EATERY

Family Restaurant
12 Robertson Road | Luck, WI 54853

Area's Best Pancakes with Anderson's Pure Maple Syrup
Home-cooked Food • Next to Luck Country Inn
For Menu & Hours Visit our Website
715.472.8987 • RedMapleEatery.com

Feed Your Outdoor Spirit!



241 Main Street Luck, Wisconsin
one block east of Gandy Dancer Trail

Quality Natural Foods • Craft Beer • Organic Wine • Snacks
Mon-Fri 9-6 & Sat 9-4 715-472-8084 nafoodcoop.com



LUCK



Luck Country Inn

In The Middle of a Four Season Playground

1-800-544-7396 • www.luckcountryinn.com

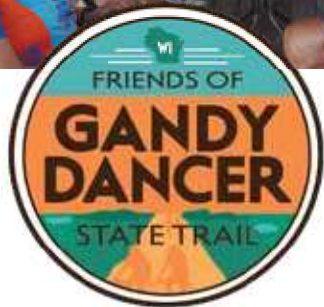
Jct. St. Roads 35 & 48 • Luck, WI 54853

715-472-2000 Motel

- 36 Clean, Comfortable Rooms
- Honeymoon/Executive Suites
- Indoor Pool, Whirlpool & Sauna
- Fishing Cleaning Facility & Storage
- Poolside Rooms

- Golf Courses
- Snowmobile
- Year-Round Fishing
- Shopping
- Cross-Country Skiing
- Downhill Skiing
- Attached Family Restaurant Opens Daily At 6 AM





Café Wren, Food Co-op & Friends of the Gandy Dancer State Trail

Friends of Health & Wellness...

Like a bicycle built for two, Natural Alternative Food Co-op and Café Wren will nourish your outdoor spirit with delicious food. Add in the Friends of Gandy Dancer State Trail, and you have an incredible team helping you find health and wellness while visiting Polk County.

The Friends of Gandy Dancer's mission is to help promote and maintain the Gandy Dancer State Trail for quiet sport activities. The southern segment of the Gandy Dancer is a 47-mile rail trail in the summer and travels through many charming communities, including Luck, WI. The businesses in Luck want outdoor enthusiasts enjoying the trail to know they support healthy outdoor lifestyles.

If you seek a quiet, safe trail experience for hiking, biking, walking, running, geocaching, and wildlife viewing, you are in Luck! Not only does Luck have a trailhead facility in the middle of town; it also has a bike fix-it station. Luck has accommodations and is only a few miles from the state's newest recreation area, Straight Lake State Park, through which the Ice Age National Scenic Trail meanders.

The Gandy Dancer passes one block from the Natural Alternative Food Co-op downtown and directly behind Café Wren just north of town. Both businesses enthusiastically welcome trail users and are trail pass vendors. Bicyclists 16 years of age and older require a state trail pass. The Food Co-op, located just one block east of the Gandy Dancer State Trail at 241 Main Street in Luck, started in 1974. More than 600 members own the store, so any profit stays in the community. The grocery store is for non-members too, so everyone is welcome to shop!

The Food Co-op supports more than 50 area farmers and businesses by selling everything from lamb chops to organic milk and body care to kimchi. In addition to grocery and natural care products, they have local beer, organic wine, and a grab-and-go deli: the recipe for making a fab picnic!

Café Wren has been a rural oasis of delicious food and community involvement since 2003 and is located at 2596 State Hwy 35, a half mile north of Luck. The café is passionate about serving real, good food in a comfortable setting. They're also committed to sourcing local, being eco-friendly, and utilizing a solar hot water heating system.

Handcrafted beverages, baked goods, and unique menu items are what make the café stand out. Maple lattes made with local Morley's maple syrup and Castle Rock organic milk are popular year-round. A few signature items include an almond nutroll pastry, bahn mi chicken sandwich, and a wide variety of flavorful soups inspired by seasonal ingredients.

Both Café Wren and the Food Co-op have invested deeply in the Village of Luck and the surrounding rural community by extensively repairing and remodeling their 100-year-old buildings.

The Friends of Gandy Dancer contribute to the area's economy and tourism scene by promoting the trail, helping with maintenance and advertising and sponsoring some of the more than 30 events that take place on the trail each year. Whether you run competitively or simply want to walk your dog, the trail has a hard, crushed limestone surface and is nearly flat, making it safe and accessible for everyone. With the Friends of Gandy Dancer promoting the trail and Café Wren and the Food Co-op feeding your outdoor hunger, the friends of health and wellness are happy to help you discover all of what Luck, WI, and the surrounding area have to offer!

For more information about the Gandy Dancer, visit

www.gandydancertrail.org

VAN METER MEATS

**HAM, STEAKS,
CHOPS, BACON**



**SAUSAGE
SPECIALTY ITEMS**

FULL SERVICE BUTCHER SHOP

MAIN STREET LUCK

HOURS: MON-FRI 8AM - 5:30PM SAT 8AM - 2PM

PHONE: 715-472-2141 | 1-800-924-8142

LUCK SADDLERY & OUTFITTERS

Expert Shoe, Saddle & Leather Repair

Red Wing & Irish Setter Boots. Minnetonka Moccasins. Western Boots for the Whole Family	Western Apparel. Accessories. Hats Jewelry. Gifts & More!	Quality New or Used Saddles. Large Selection of Tack & Horse Care Products
--	--	---

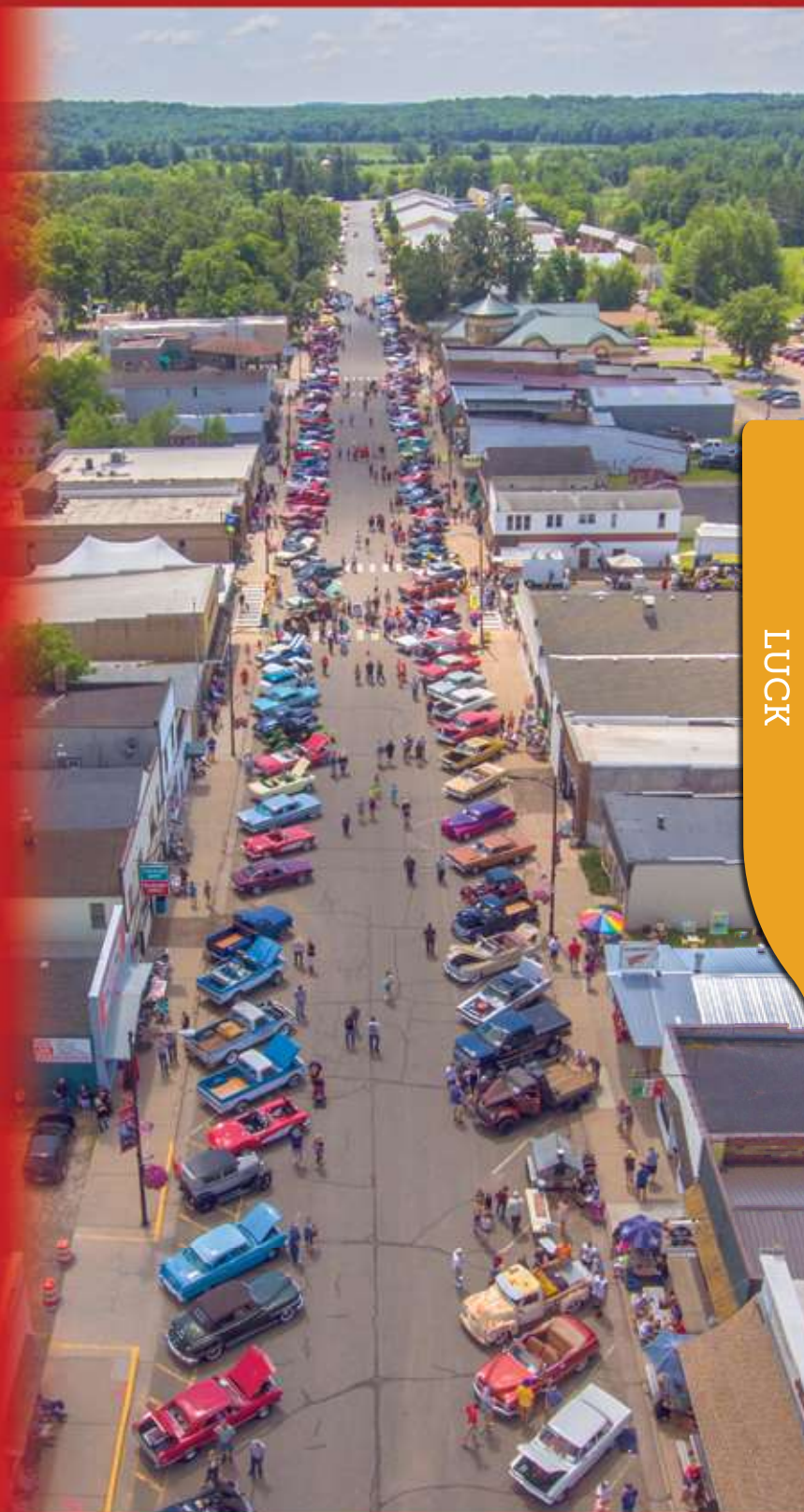
113 Main St. S • Luck, WI 54853 | 715-472-8199 | Lucksaddlery.com



YOU'RE IN LUCK!

2020 Events

- | | |
|------------|--|
| Feb 6-8 | Luck Winter Carnival |
| Feb 7 | Fireworks on Big Butternut Lake |
| Feb 8 | Torchlight Parade |
| April 4 | Luck EMT Smelt Fry |
| Jun-Aug | Music in Triangle Park (Every Tues) |
| July 17-19 | Lucky Days Festival |
| July 18 | Classic Car Show |
| July 19 | Lucky Days Parade |
| Aug 8 | Luck Fire Department Corn Feed |
| Oct 24 | Halloween Trick or Treat & Parade on Main Street |
| Nov 7 | Luck Lutheran Fall Dinner |
| Dec 4-5 | Luck Holiday Experience |



LUCK

www.DiscoverLuck.com
www.LuckWisconsin.com

Village of *Milltown*

MILLTOWN



Welcome to *Milltown*

Patrick Lillis, born in Ireland, came to Polk County in 1856 and made a claim on where the town Milltown now stands. He said it reminded him of his home in Cork County, Ireland. He came from the Irish village of Milltown, so he named the territory Milltown.

The northern part of the township was settled primarily by the Danes and Parmigians and the southern part by the Irish.

Milltown Township is located in Polk County, a little over an hour northeast of the greater Minneapolis/St. Paul area. The 2000 census shows our population to be 2,600. During the summer months, the population almost doubles, as many lake people return.

Primarily a rural agriculture area we are blessed with several popular recreational lakes. Balsam, Half-Moon, and Antler lakes bring many people to our community to enjoy the wonderful lake living. Our close proximity to the Twin Cities is rapidly turning our community into a commuter town. Yet our rural landscape is largely intact.

We are fortunate to enjoy a number of area parks, golf course and ski areas. The Gandy Dancer State Trail runs through our township and snowmobiles can access hundreds of miles of snowmobile trails. The township has several lake accesses and boat ramps.

Besides the 4th of July observance and Pumpkin Fest, the other notable event in Milltown is the Fisherman's Party. It was organized in 1950 and now is a two-day celebration. This publicizes the great number of fishing lakes in the area; 13 of them are within eight miles of town. Held in June each year, the festival celebrates the close-knit community spirit, with old-fashioned kids' games, grand parade, car show, softball and volleyball tournaments, and more.

In 1961, the three towns of Balsam Lake, Centuria, and Milltown integrated and a new school, Unity, was built four miles southeast of Milltown on Highway 46. The school serves PreK-12. Fire protection is located in Milltown Village and is one of the finest in the state.



- LIQUOR
- BAIT
- HUNTING
- FISHING
- ARCHERY
- GUNS

715-825-3326
irlbeckoutdoors.com
irlbeckoutdoors@outlook.com
422 Main Street West Milltown, WI 54858





Julia's Java
201 Main St. W., Milltown, WI 54858
Located Near the Gandy Dancer State Trail
Bakery, Espresso Drinks, Soup, and Sandwiches
(715) 205-4695 | www.JuliasJava.net

photo © Dean S Acheson

Village of *Osceola*

Welcome to *Osceola*

Rich in history and an abundance of natural playgrounds, Osceola is a place you'll love to call home away from home. Find a haven from the stresses of everyday life. Culturally rich, relaxing, and rejuvenating, Osceola is your easy small town get-away. Our friendly, historic town is a place that provides a base camp to come back to after you explore all the attractions nearby, where it's fun to shop and dine and easy to connect with nature. It may be difficult to believe a little town offers so much to do, but you'll find lots of attractions to choose from that provide a welcome respite without all of the crowds. Take a vintage train ride or paddle along the St. Croix National Scenic Riverway, explore four nearby state parks, savor apple pie, or sip on local craft brews or wine. Explore farm culture and find great cheese curds and jams and jellies, or try out the adventure park at Trollhaugen nearby. Osceola Landing is where you can launch your kayak or canoe and provides beautiful picnic spots and a swimming beach.

Get away from the crowds, slow your pace a bit, and discover a place as close as an hour's drive, but as far away as you'll ever need to be. Osceola is located on the St. Croix National Scenic Riverway, and its historic buildings form the core of downtown and contribute to Osceola's small-town charm. Located less than 40 miles northeast of the major metropolitan area of Minneapolis and St. Paul, the village enjoys a perfect balance of recreation, tourism, business, and industry.

The downtown commercial district, listed on the National Register of Historic Places, tempts visitors with one-of-a-kind shops that feature local artists and hand crafted items – providing a full day of shopping and discovery. Eateries include farm-to-table fare and beautiful outdoor dining options where you can sit next to the rushing Geiger Falls or enjoy a game at Little Lambeau. Cascade Falls, located right downtown, provides a cooling respite on hot summer days and a frosty landscape with natural ice sculptures in the winter. Several in-town trails create an opportunity to dip your toes in the Osceola Creek, hike to the river, and up to the bluffs that provide the best panoramic views of the St. Croix River Valley. The Osceola Depot and Railway attracts visitors to enjoy a vintage train ride through limestone bluffs, woodlands, and the river valley. Pizza, dinner, and brunch trains are popular spring through fall color season. Another attraction that entice visitors is the Osceola Fish Hatchery located on County S just one mile north of Osceola.

Osceola is a Wisconsin Main Street Community. In 2006, Osceola received a Crown Community Award from American City and County. In 2007, Osceola received a designation as a Preserve America Community for its efforts in preserving and promoting its historic and cultural heritage. Whether you're looking to start a new business or just visit, Osceola's Main Street is definitely the place to begin.

201 3RD AVE E • OSCEOLA, WI • LIKE US ON 
The Chocolate Gnome
GOURMET CANDY SHOP

WE MAKE ALL OF OUR CANDY FROM SCRATCH!

COFFEEBARK, CARAMELS, CHOCOLATES, CREAMS,
ENGLISH TOFFEE, SNACK MIXES, COOKIES,
KRISPY TREATS, GOURMET CANDIES, DIPS,
DOOR COUNTY COFFEE, PHOTOGRAPHY CARDS, GIFTS

(651) 335-0189



*Inn on the
St. Croix
River*

Formerly Autumn House Inn

Directly on the St. Croix River

Breakfast Delivered to Your Room

Walking Distance to Charming Shops

Private, In Suite Bathrooms

Spacious & Comfortable Rooms

Relaxed Atmosphere

80

305 River Street

Osceola, Wisconsin

www.autumnhouseinn.com

715-417-3556

612-325-0892

"A different kind of bed & breakfast"

Coming Home 

Inspiring you to create a space you'll love!

- New Home Decor
- Painted Furniture
- Farmhouse Accessories
- Locally Crafted Items
- Vintage Finds
- Boutique Clothing

For our hours & to see what's new follow us on Facebook & Instagram @cominghomeosceola

Find us at 206 N. Cascade • Osceola, WI

Uptown 

Espresso Bar • Gift Boutique

Look for us on Main Street
111 N Cascade Street
Osceola, WI 54020

715-417-3222

Find us on Facebook 

Camps
Retreats
Conferences
Family Camps
Crafting Retreats

The Association Retreat Center
30 acres of fun and relaxation in the beautiful St. Croix River Valley!

Close to:

- Shopping
- Fishing
- Hiking trails
- Skiing
- Golf courses
- Recreation Areas

The Association Retreat Center
2372 30th Avenue
Osceola, WI 54020
715-294-2877
www.arc-afic.org
Email: info@arc-afic.org

Man-made swimming beach  Full-size gym/multi-purpose building 

STUDIO  **SALON • SPA**

AN AVEDA CONCEPT SALON

Haircuts • Styling • Color • Permanent Waves
Hair Extensions • Hair Removal • Bridal Parties
Facials • Cosmetic Applications • Massage
Gel Polish • Manicures • Pedicures

213 1st Ave. Osceola, WI 54020 • 715-294-4650
www.studioasalonspa.com • Like us on 

Osceola Bluff & Cascade Falls

Twin Attractions in Osceola



For thousands of years, a limestone bluff (Osceola Bluff) that overlooks the St. Croix National Scenic Riverway has been an area landmark. Chippewa Indians camped here along the “ginseng trail” that stretched from Balsam Lake in Polk County to New Richmond in St. Croix County.

The bluff is a resting place for resident bald eagles. White-tail deer walk its trails. Hepaticas, dogtooth violets, and trilliums grow in profusion. You can hike to the top of the bluff, which rises 300 feet above the river.

The trailhead can be found behind the Cascade BP. You can park on Depot Road. The trail is gated against motor vehicle traffic; walk up the hill to find the trailhead. The trail is approximately 0.7 mile in length and goes through a hardwood forest. There are spectacular views, especially during fall leaf colors, of the St. Croix River and downtown Osceola.

Cascade Falls

Another natural attraction in downtown Osceola is Cascade Falls, created by the drop of Osceola Creek some 25 feet. Cascade Falls was a stop for excursion steamboats in the late 1880s, according to a historical marker at the site.

Street parking is available right at the top of the stairs. Start at Memorial Park; then walk down the 156 steps into Wilke Glen, which is the base of the falls. In the summer, you can walk behind the water falling from up above. Also, bring a lunch or snack, as there is a picnic table there. In the evening, linger on the bridge and be enchanted by the colorful spotlights dancing upon the falls.

The Wilke Glen Trail follows the Osceola Creek to where it joins the St. Croix River beneath Hwy. 243. That's where you will find the beginning of the Eagle Bluff Trail. That steep and rugged trail takes you up to the Simenstad Trails on the bluff.

Another Place to Visit

Bring a fishing pole and be sure to have a trout stamp on your license if you want to fish for trout in Mill Pond or upstream above Mill Pond, which is on the opposite side of the highway from Cascade Falls.



211 Cascade Street

Osceola, WI 54020

715.417.2074

- Ukuleles
- Banjos
- Guitars
- Picks
- Strings
- Tuners
- Jewelry
- Vinyl
- Posters & Framed Prints
- CDs & Tapes
- Repairs
- Violins
- Drums
- Books
- Harmonicas
- Lessons
- T-Shirts

**Enjoy
\$5.00 OFF
ALL
purchases
of \$25.00
or more!**



RedBirdMusicStore.com 

\$3.00 OFF
a \$25 gift certificate
or \$25 purchase



St. Croix Falls

City of Trails

Wisconsin Interstate Park

The Wisconsin Interstate Park is Wisconsin's oldest state park, which features an impressive, steep basalt gorge called the Dalles of the St. Croix River. The park boasts spectacular views of walled bluffs, deep valleys, serene forests, lush meadows, and teeming wetlands. Multi-use trails allow hikers, snowshoer, and cross-country skiers of all abilities to explore the unique glacial features and diverse habitats of the park. Excellent birdwatching opportunities await you, as a robust bird population calls Wisconsin Interstate Park home. While you're here, stop for a fun, scenic photo. You'll find a Travel Wisconsin selfie stand on the Pothole Trail, overlooking the Dalles.

The famous Ice Age Trail begins here. Discover abundant flora and fauna, geological potholes, and logging and mining history on the trail, or visit the park's Ice Age Interpretive Center to learn more through film, photography, murals, and other exhibits.

Come explore one of the most striking state parks – you won't be disappointed. For more information, visit www.friendsofinterstatepark.org.

Explore the Bluffs and Dalles in *The City of Trails*

A historic river town located along the St. Croix River, St. Croix Falls is known as the City of Trails. Just an hour away from the vibrant city life of Minneapolis–St. Paul, St. Croix Falls provides access to diverse wildlife and landscapes via the Gandy Dancer State Trail; Ice Age Trail; Woolly Mountain Bike Trail; and numerous hiking trails in the Wisconsin Interstate Park, the St. Croix National Scenic River Way, and other local parks. From the beautiful backdrop provided by the bluffs and dalles to the convenience of the nearby metropolitan areas, St. Croix Falls is an ideal place to live, work, and play.



ST. CROIX FALLS public library

discover • connect • enjoy

230 S Washington St

www.scfpl.org

715.483.1777

Open M-F 9:30 am - 6:00 pm
& Saturday 9:30 am - 1:00 pm



St. Croix Falls, Wisconsin & Taylors Falls, MN
and surrounding areas



Choose Your Adventure



SLEEP TIGHT
and Relax



OUTDOOR
Adventure



SEE, DO
and Shop

Visit our website to discover more.

www.thestcroixvalley.com

More than a Daytrip.

Expand your visit to the Upper
St. Croix Valley region.

While you're here, take time to discover the spectacular
landscapes, grandeur and adventure that awaits.



Book your stay now!

We are well known for outdoor recreational opportunities such as canoeing, kayaking, hiking, fishing, biking, and skiing. The area is chock full of gorgeous lakes, trails of all kinds, and of course, the breathtaking and scenic St. Croix River. There are four state parks, and one national park that guarantee you will see enough impressive and historic rock formations, cliffs and rapids to fill your camera and memory bank to joyous levels.

Come for the day. Stay the weekend.
We are **"More than a Daytrip"**.



Discover the *Dancing Dragonfly Winery*

Dancing Dragonfly Winery's passion for great wine is evident before even setting foot on the grounds. Prior to entering the winery's beautiful tasting and event facility, visitors travel a road lined with acres of carefully tended grapevines.

In just six years, Dancing Dragonfly Winery transformed this landscape of once-abandoned farmland to lush vineyard. Over 32,000 cold-climate grapevines have been hand-planted on the sprawling 102-acre property since 2012, making Dancing Dragonfly's vineyard one of the largest in the state of Wisconsin.

The winery's spacious tasting room and idyllic patio feature fabulous vineyard views, allowing guests to enjoy the complete grape-to-glass experience as they sip award-winning local wines. All of Dancing Dragonfly's wines are made on location in their state-of-the-art production facility. Most are made entirely from cold-hardy grape varieties, and a few feature classics like Chardonnay and Sangiovese.

Their approach to winemaking is a blend of art and science. Each vintage undergoes a rigorous blending process, relying on collaborative input from many palates. The end result is a portfolio of fine wines known for its balance, flavor, and complexity. With over 20 wines, beginners and wine enthusiasts alike always seem to find a Dancing Dragonfly wine they love.

Located just an hour northeast from the Twin Cities in St. Croix Falls, Dancing Dragonfly Winery is the perfect daytrip destination. It is open seven days a week year-round, and offers wine tastings, wine by the glass or bottle, and many tasty food options (including their locally legendary wood-fired pizza). The winery also hosts a variety of fun events such as comedy shows, concerts, weddings, DIY classes, and festivals. Visit DDWinery.com for the complete event calendar, hours and more information on this up-and-coming winery.



ST. CROIX FALLS

Our spacious tasting room is open year round for wine tasting. Our beautiful outdoor deck and covered patio overlook 52 acres of vineyard. It's a great way to relax and enjoy the finest wines the Midwest has to offer. Dancing Dragonfly Winery is a one-of-a-kind winery experience. Our passion shows in the vineyards, the winery, our events, our food, and in great tasting wine.



2013 | 120th Avenue | St. Croix Falls, WI 54024 | 715.483.WINE | DDWinery.com

DANCING
DRAGONFLY
WINERY



Paddle the Beautiful *St. Croix River*

Beginning in Upper St. Croix Lake in Douglas County, the St. Croix River flows 164 miles to its confluence with the Mississippi River near Prescott. The majority of the river creates the state boundary between Minnesota and Wisconsin.

During summer the river is dotted with canoes and kayaks as people take in some relaxing paddling along with the beautiful scenery and wildlife, including bald eagles, blue herons, turtles, and sometimes deer drinking at the river's edge.

The upper St. Croix River flows past heavily wooded banks and islands. The upper 200 miles of the river is federally designated as a Wild and Scenic River.

The lower St. Croix River showcases steep sandstone and limestone bluffs with winding side channels. This segment is also federally designated as a Wild and Scenic River.

Canoe and kayak rentals are
available at the following places:

Eric's Canoe Rental

1289 S. Vincent St. • St. Croix Falls, WI 54024 • 651-270-1561

Trip Locations: Highway 70 Landing to Osceola Landing, Wild River State Park.

Services: Canoe and kayak rentals.

Riverwood Canoe

254 South Cascade Street • Osceola, WI 54020 • 715-222-2288

Trip Locations: Gordon Dam Landing to Boom Site Landing, Namekagon River.

Services: Canoe, kayak, and paddleboard rentals.

Taylors Falls Canoe Rental

307 Milltown Road • Taylors Falls, MN 55084 • 651-465-6315

Trip Locations: Highway 70 Landing to Boom Site Landing.

Services: Canoe and kayak rentals. Shuttle service for non-renters. Large group services.



715-483-7111

133 North Washington Street
St. Croix Falls, WI 54024

Valley Sweets, LLC

Super Premium
Chocolate Shoppe
Brand Ice Cream

24 FRESH
HANDMADE
WAFFLE
CONES
ICE CREAM FLAVORS

All your favorite Candies:
Salt Water Taffy, Hard Candy,
Lolly Pops, Bubble Gum,
Jaw Breakers & All of your
favorites from the past!

THE COBBLER SHOP Shoes & Repair LLC

Hours: Monday-Friday 9-5:30, Saturday 9-4

Red Wing • Timberland • LaCrosse
Tony Lama • Minnetonka Moccasins & Sandals • Born
Double H • Eastland • Hush Puppies • Jambu
New Balance • K-Swiss • Chaco • Corral

Located in the Downtown Heritage Mall

102 S. Washington | St. Croix Falls, WI 54024
715-483-5798 | cobbler-shopshoes.com

FAWN-DOE-ROSA WILDLIFE EDUCATIONAL PARK

715-483-3772



BRINGING FRIENDS TOGETHER!

Deer & other forest animals
Visit Old MacDonald's Farm to meet our Farmyard Animals
Pony Rides (Memorial Day - Labor Day)
Petting & Feeding Area & Picnic Area
Large Gift Shop - Something for everyone!

OPEN MID-MAY - MID SEPT: 10AM - 5PM • WEEKENDS OCT (Weather permitting)
2 Miles East of the scenic St. Croix River on US Hwy 8

www.fawndoerosa.com

BRING THIS AD ON YOUR NEXT VISIT FOR A FREE BAG OF FEED

Village of *Turtle Lake*



Rock Your Vacation with *Turtle Lake Events*

TURTLE LAKE

From pow-wows to rocking the park, Turtle Lake rolls out the red carpet for families looking for fun things to see and do.

May brings our annual Turtle Lake Spring Market with book and plant sales and now featuring a Children's Business Fair. This event hosts young entrepreneurs with an interesting variety of items available for purchase.

The opening of the Turtle Lake Museum in June kicks off the summer in style. With new items and displays added regularly, this is a must-see while you visit our village. Summer Solstice Celebration is a new event hosted in downtown Turtle Lake. Food trucks, vendors, sidewalk art and live music!

July hosts the Turtle Lake Inter-County Free Fair! Meet new people and reconnect with old friends during this annual festival.

When August arrives, it's "Cars, Crafts & Rock-N-Roll in the Park." The annual show gives dash plaques to the first 200 entries and

awards trophies to all classes. More than 50 craft vendors display their wares, too.

Turtle Lake hosts a wonderful variety of family-friendly events and activities. Spring, Summer, Fall and Winter – Turtle Lake has something special for your enjoyment all year long. Stay tuned for our new event featuring Dock Dogs in September!

Don't miss the Lights in the Park, when the Village Park is lit with thousands of Christmas lights and displays during the month of December. You can drive through the park or go for an evening stroll.

For more details on these events, and other happenings, see page 63 or stop by the Turtle Lake Village office, 114 Martin Ave. E, Turtle Lake, or call toll free 800-811-0338. Knowledgeable staff can offer advice on local and area travel planning. Free brochures from local businesses and attractions are available along with regional and statewide guides and maps.

Make Turtle Lake Your ATV Playground



Turtle Lake has easy access to the Cattail Trail and Northern Railroad bed, which accommodates ATVs, snowmobiles, bicycles and walkers. Local streets in Turtle Lake are open to ATVs and UTVs. Continue on the Cattail Trail through the Village of Almota to the ATV Intensive Use Area, aka ATV Playground, for 20 acres of sandy hills, figure eights, and curves for the ATVer enthusiast and 20 acres of woodland for some mudding opportunities. There is even an area for young riders and their "cc" machines.

Turtle Lake is the place to stay while you play in Northwest Wisconsin with its variety of lodging accommodations, hotels, local resorts, campgrounds, and a lovely bed & breakfast, the Canyon Road Inn – each room with private bath, whirlpool tub, and fireplace. (The Canyon Road Inn was named one of the Top Ten B&Bs for Men in *Midwest Living* magazine.) All accommodations are accessible from the ATV/snowmobile trails.

Events Worth the Trip...



July 10th-12th Turtle Lake Inter-County Fair

The Turtle Lake Inter-County Fair is held annually the second weekend in July. This FREE admission event offers family-friendly activities like the Livestock Expo, Horse Pull, Truck & Tractor Pull, Complete Midway with games and rides for all ages, and Live Music every night! There is also the Turtle Trot – a 5K Run/Walk and a 10K race on Saturday morning, pancake breakfasts, the Grand Parade and Kiddie Parade on Sunday, and the Legendary Turtle Derby, as well as the sawdust pile and other unique activities for the kids following the parade! Savings on admission means more food, drinks, rides, and games all weekend long.



August 15th-16th Moon Lake Threshing Bee

Always held the third weekend in August, the Moon Lake Threshing Bee offers a unique experience for the family all weekend. In addition to displays and demonstrations of yesteryear, you can enjoy old-time music, shop at the flea market and craft fair, and fill up on delicious food, including homemade pies. Bring the kids for a pedal tractor pull, sawdust pile, or a small train ride. The Sollman Farm is easy to find, located 4 miles east of Clayton and 6 miles south of Turtle Lake, off County Road K across from Big Moon Lake.



Late Summer of 2020 47th Annual Wild Rice Festival

The St. Croix Chippewa Indians of Wisconsin will host their 47th annual Wild Rice Festival late in the summer of 2020.

The St. Croix tribe's history is intimately connected with the harvest of wild rice: Nearly 600 years ago, the St. Croix Chippewa Indians arrived in the northwestern Wisconsin area after being directed to move southward from Lake Superior to the "place where there is food upon the water." So it was that unlike other tribes whose main crop was corn, the St. Croix's main crop was wild rice, which grew in the lakes of Wisconsin and surrounding areas. It's this age-old connection to wild rice that the tribe commemorates with this annual festival.

The centerpiece of the Wild Rice Festival is a two-day traditional pow-wow. Drummers, singers, and dancers from tribes all around the country travel to attend the powwow, which typically attracts up to 2,000 visitors. For more information, visit stcroix-casinos.com.

TURTLE LAKE

On the crossroads of US Hwy 8 & 63, Turtle Lake is the natural choice. Offering a wide variety of recreational activities and lodging accommodations. Turtle Lake is the place to stay while you play in Northwest Wisconsin!

**Request your Map
& Brochure today!**

Call: 800-811-0338 or

Email: info@turtlelakewi.com

**Contact: Village Hall - Tourist Information
PO Box 11 - 114 Martin Ave East
Turtle Lake, WI 54889**

turtlelakewi.com



TURTLE LAKE MUSEUM

**Open: June—September
2nd & 3rd Weekends | 10:00 a.m.—4:00 p.m.**

History of Turtle Lake, Railroad Exhibits, War Memorabilia, School and Agriculture Exhibits, Antique Phone Collection

232 Willow Street South—East of Downtown TL



Wedding Chapel - Available for Special Occasions

Baptisms, Renewal of Vows, Weddings, & More
Historic Episcopal Church restored by G.T.L.A.A.

The Greater Turtle Lake Area Association Welcomes You

715-986-4680 | www.gtlaa.net



440 Industrial Street, Turtle Lake, WI
715-986-4244
www.sparetimebowlingbargrill.com

Full Menu, Daily Lunch
& Dinner Specials!
Take Outs Available!
Friday Fish Fry!
Open Mon-Sat at 10 a.m.
Sunday at 11 a.m.



We Specialize in Homemade
Pizza & Broasted Chicken!

**NEW Party Room
Available to Reserve!**

Wisconsin

Add to Your "To Do" List!

Visit Turtle Lake

DISCOVER the history, DISCOVER the fun!



From the lakes and woodlands to the busy nightlife, a visit to Turtle Lake is always bucket-list worthy.

Visit www.turtlelakewi.com to learn more!

CELEBRATIONS AT THE GABLES

 Country/Rustic-Chic Event Venue

- Reasonable Rates
- Venue rental
- Catering

Family owned 125 year old farmstead

Chapel, Stables, Grooms Room & Bridal Chamber

Reception Area Seats 280
Indoor Ceremony 240
Outdoor Ceremony 300+

285 145TH AVE., TURTLE LAKE, WI 54889 | 715-641-0791
gegeoconnell@gmail.com | celebrationsatthegables.com

CANYON ROAD INN

Bed & Breakfast

KING SIZE BEDS • WHIRLPOOL TUBS • FIREPLACES

Nestled in the beautiful northwoods of western Wisconsin Canyon Road Inn is the perfect getaway in all seasons! Enjoy the casual elegance in one of our spacious guest suites overlooking the lake or woods & wake to the aromas of a freshly made hot breakfast.

www.canyonroadinn.com
Turtle Lake, WI • 715-986-2121



112 Railway Avenue
Downtown Turtle Lake, WI

Across from Railway Park
on the Cattail Trail

Kitchen Open Daily
11am - 9pm

715-986-4910

Jim's DAIRY STORE

Dairy Products • A Variety of Cheese
Cheese Trays • Handmade Gifts
Farm Supplies • Dairy Equipment

432 US Hwy. 8 & 63
Turtle Lake, WI 54889

715.986.4465
jim_dairystore@yahoo.com

FRONTIER RESTAURANT

HOME COOKING • DAILY SPECIAL
BREAKFAST • LUNCH & SUPPER

LARGE MENU WITH SENIOR
MENU & KIDS MENU

HOURS: MON - SAT: 6am-8pm
SUN: 6am-2pm

Hwy 8 & 63 • Across from the Casino
(715) 986-4797

LOTS OF HOMEMADE
SOUP & DESSERTS
TO GO ORDERS WELCOME!

Polk County *Antique Shops*

On the Hunt for Antiques & Collectibles



There's no thrill quite like the adrenaline rush you'll feel at finding a match to fill the hole in your antique collection of miniature toys or glassware, or to discover a treasured find to place on the fireplace mantle or in the entryway of your home.

Polk County is a wonderful place for antique and collectibles shopping. Antique shops are scattered throughout the county, and their proprietors have searched far and wide to fill their stores for nearly endless browsing.

The staff of our antique shops will be happy to help you in your search for that special item and to give you some expert advice. The right antique can become a focal point of a room or become a conversational piece for years to come. Or maybe you're "just looking" to see what's captures your attention, which is half the fun of the hunt!

PhyllBea's of Amery

Antiques, Collectibles & Gifts "All with a Unique Flair"

Antiques, collectibles, linens, glassware, handbags, toys, candles, home decor, furniture, garden, premium cigars, & northwoods decor, Dick & Larry's Mancave and much, much more!

845 Hwy 46 North
Amery, WI 54001

(1 mile North of Downtown, Next to
Super America & exactly 4.5 miles
south of US Hwy 8 on Hwy 46)

Open on Weekends Only
For Store Hours Please
Call 612-720-6092

www.PhyllBeasOfAmery.com

You Never Know What You'll Find!

Angel Hands Thrift Shop

Stop & Shop at the 4-Way Stop
Corner of Hwy 35 & 48 in Frederic, WI

715-288-7378

[facebook.com/angelhandsthriftshop](https://www.facebook.com/angelhandsthriftshop)

Open Sun - Fri
Closed Sat

NIFTY THRIFTY



**BUSINESS
HOURS
MON - SAT
10AM - 4PM**

715-825-7283

101 MAIN ST. WEST | MILLTOWN, WI

FARMHOUSE VINTQUES

Antiques | Collectables | Furniture
Books | Toys | Jewelry
Hand-made Soaps & Bath Products
(Scented with essential oils - no artificial scents or colors)
Something for everyone!

Like us on [f](https://www.facebook.com/farmhousevintques)

715-557-1912 | 101 Oak St. E. | Frederic, WI 54837



Only at The Forts . . .

A Fun, Interactive Learning Experience at a Unique Historical Site!



FUR TRADE POSTS • OJIBWE VILLAGE MUSEUMS • GIFTS • GARDENS
TOURS • EXHIBITS • HIKING TRAILS

Open 10 a.m. to 4 p.m.,
Wed. thru Sun., May 23 thru
Sept. 6; plus Sept. weekends



**Forts Folle Avoine
Historical Park**

715-866-8890 • Danbury, WI

The Forts.org

Present this ad for **\$2⁰⁰ Off** General Admission PC

Voted **BEST PLACE TO SHOP** in Burnett Co.

**Eat
Shop
Cook
Relax**



Create . . . experience

THE SHOPS AT THE LODGE

- ✦ **Acorn Pantry** – Quality Kitchenware & Pantry Supplies, Gift Registry, 715-349-8995
- ✦ **Chattering Squirrel Coffee Café** – Espresso Bar, Bakery, Deli, Breakfast & Lunch, Kids Menu, Soups, Sandwiches, Treats, Gifts, Box Lunch Catering, 715-349-8282
- ✦ **Making Memories & More** – A Unique Scrapbooking & Card Making Store, Classes, 715-349-8900
- ✦ **Nouveau Salon Spa** – Experience Rejuvenation, 715-349-5880
- ✦ **Syren General Store** – Home & Cabin Decor, Gifts, Jewelry, Minnetonka® Moccasins, WoodWick®, Resortwear, Apparel, Accessories, Toys, Games, 715-349-8484

Open Daily • Gift Certificates Available

7711 Park St. W. • St. Rd. 35/70 • Siren, WI • TheShopsAtTheLodge.com

44th Annual
World Championship
Snowmobile
Watercross

**The
Fastest
Show on
H2O!**

**Friday thru
Sunday,
July 17, 18 & 19**

Memory Lake
Grantsburg, WI

GrantsburgWatercross.com

**Premier, Affordable
Exterior Home Solutions**

Industry leading
limited warranties!

**Renewal
by Andersen**
WINDOW REPLACEMENT an Andersen Company



Let this be the **LAST** siding
& roof you ever buy!



**PREMIUM
METAL
SHINGLE
ROOFING**

STEEL SIDING & GUTTERS

**Engstrom's
Siding & Window Co.**



1-800-367-2225

715-349-5887 • Siren, WI

WI Lic. #2539



EngstromSidingAndWindow.com

**Making great memories,
one round at a time . . .**

**9-Hole Regulation Course • 9-Hole Par 3 Course
FootGolf Course**



- Driving Range
- Practice Green & Bunker
- Cart & Club Rental
- Full Service Bar & Snacks



715-866-7953

FoxRun.golf

**Pay for 9*,
Play 18** When you bring in this ad.
Green fee only. *Carts not
discounted. 2020 season. PC

27536 St. Rd. 35 • 2 miles North of Webster, WI

REGIONAL BUSINESSES

Find What You Need in *Polk County*

Accommodations

AMERY

Camelot Motelpg. 5

BALSAM LAKE

Dream Catcher Innpg. 5

Ward's Balsam Beach Resortpg. 5

LUCK

Luck Country Innpp. 5,51

OSCEOLA

Inn on the St. Croix Riverpg. 55

Pleasant Lake B&Bpg. 5

River Valley Inn & Suitespg. 5

TURTLE LAKE

Canyon Road Innpg. 65

Arts & Crafts

AMERY

Art Z Fine Art Gallerypg. 31

BALSAM LAKE

Balsam Arts Gallerypg. 20

WEBSTER

In a New Light Gallerypg. 69

Attractions

AMERY

Z-Orchardpg. 35

BALSAM LAKE

Polk County Museumpg. 27

CLEAR LAKE

Clear Lake Golf Clubpg. 43

DANBURY

Forts Folle Avoinepg. 67

DRESSER

Trollhaugen Ski Resort and
Aerial Adventure Parkpg. 45

FREDERIC

Frederic Depot/Museumpg. 19

One 10 Gallerypg. 46

GRANTSBURG

Grantsburg Watercrosspg. 67

OSCEOLA

The Association Retreat Centerpg. 56

SIREN

The Shops at the Lodgepg. 67

ST. CROIX FALLS

Dancing Dragonfly Winerypg. 60

Fawn-Doe-Rosapg. 61

Polk County Fairpg. 11

St. Croix Festival Theatrepg. 23

TURTLE LAKE

Celebrations at the Gablespg. 65

Turtle Lake Museumpg. 64

WEBSTER

Fox Run Golf Coursepg. 67

Food & Spirits

AMERY

Amery Ale Workspg. 7

Birch Street Barpg. 6

Ellie's Ice Cream Parlorpg. 35

Tac-Two Sports Bar & Grillpg. 6

The Village Pizzeriapg. 6

Wolter's Shoreview Supper Clubpg. 7

BALSAM LAKE

Balsam Lake Cafepg. 7

KJ's New Northpg. 8

Paradise Landingpg. 28

CUSHING

The Dug Out Bar & Grillpg. 44

FREDERIC

BARRel Housepg. 7

Skol Bar and Grillpg. 47

LUCK

Café Wrenpg. 19, 51

Red Maple Eaterypg. 50

MILLTOWN

Julia's Javapg. 19, 54

OSCEOLA

Watershed Cafepg. 6

TURTLE LAKE

Frontier Restaurantpg. 8, 65

Hotel Bar and Grillpg. 65

Spare Time Bowl Bar & Grillpg. 64

General Services

AMERY

Amerypg. 31-33

Chet Johnson Drugpg. 35

City of Amerypg. 32-25

YMCA Camp Icaghowanpg. 31

BALSAM LAKE

Balsam Lake Area Chamber of

Commercepg. 24

Balsam Lake Pro-Lawn Inc.pg. 28

Balsam Lake Public Librarypg. 28

Interfaith Caregiverspg. 2

Light Hearted Wellnesspg. 26

Life's Journey Day Spapg. 26

Polk County Economic Development

Corporationpg. 1

Sunnyside Marinapg. 28

Village of Balsam Lakepg. 24-48

CLAYTON

Berghammer Builderspg. 37

Clayton Lions Clubpg. 37

Clayton School Districtpg. 38

Richardson Sportsmen Clubpg. 37

Village of Claytonpg. 36-39

CLEAR LAKE

Clear Lake Community Centerpg. 43

Village of Clear Lakepg. 40-43

CENTURIA

Village of Centuriapg. 29-30

CUSHING

Village of Cushingpg. 44

DRESSER

Village of Dresserpg. 45

FREDERIC

Daeffler's Quality Meatspg. 48

The Rose Gardenpg. 48

Village of Fredericpg. 46-49

LUCK

Luck Public Librarypg. 50

Luck Village Hallpg. 50-53

MILLTOWN

Village of Milltownpg. 54

OSCEOLA

Town of Osceolapp. 55-57

SIREN

Engstrom's Siding & Window Co.pg. 67

ST. CROIX FALLS

St. Croix Fallspp. 58-59

St. Croix Falls Public Librarypg. 58

St. Croix Valleypg. 59

The Cobbler Shoppg. 61

TURTLE LAKE

Village of Turtle Lake

.....inside front cover, pp. 62-65

Medical Services

AMERY

Amery Hospital and Clinicback cover

Realtors

AMERY

Park Lakes & Land Realtypg. 35

Retail

AMERY

Amery Meat Marketpg. 34

Dragonfly Gardenspg. 35

Phyllbea's of Amerypg. 66

BALSAM LAKE

Balsam Lake Hardware & Rentalpg. 25

CLAYTON

BPpg. 38

CLEAR LAKE

NextGenpg. 43

Nilssen's Marketpg. 43

True Valuepg. 43

FREDERIC

Angel Hands Thrift Shoppg. 66

Farmhouse Vintiquespg. 66

Frederic Grocerypg. 47

Fredewric Hardwarepg. 47

Mud Hut Gifts & Craftspg. 48

My Alpaca Store & Fiber Studiopg. 47

LUCK

Luck Hardwarepg. 50

Luck Saddlerypg. 52

Natural Alternative Food Co-oppg. 51

Van Meter Meatspg. 52

MILLTOWN

Irlbeck Outdoorspg. 54

Nifty Thriftypg. 66

OSCEOLA

Coming Homepg. 56

Redbird Music Storepg. 57

Studio A Salonpg. 56

The Chocolate Gnomepg. 55

Uptown Giftspg. 56

ST. CROIX FALLS

Valley Sweetspg. 61

TURTLE LAKE

Jim's Dairy Storepg. 65

We've made B/G changes!
Stop and see our expanded gallery!



SUPPORT **KIDS** ENJOY **ART**

The art in our gallery has been created by kids redefining themselves while in residential mental health treatment at Northwest Passage.

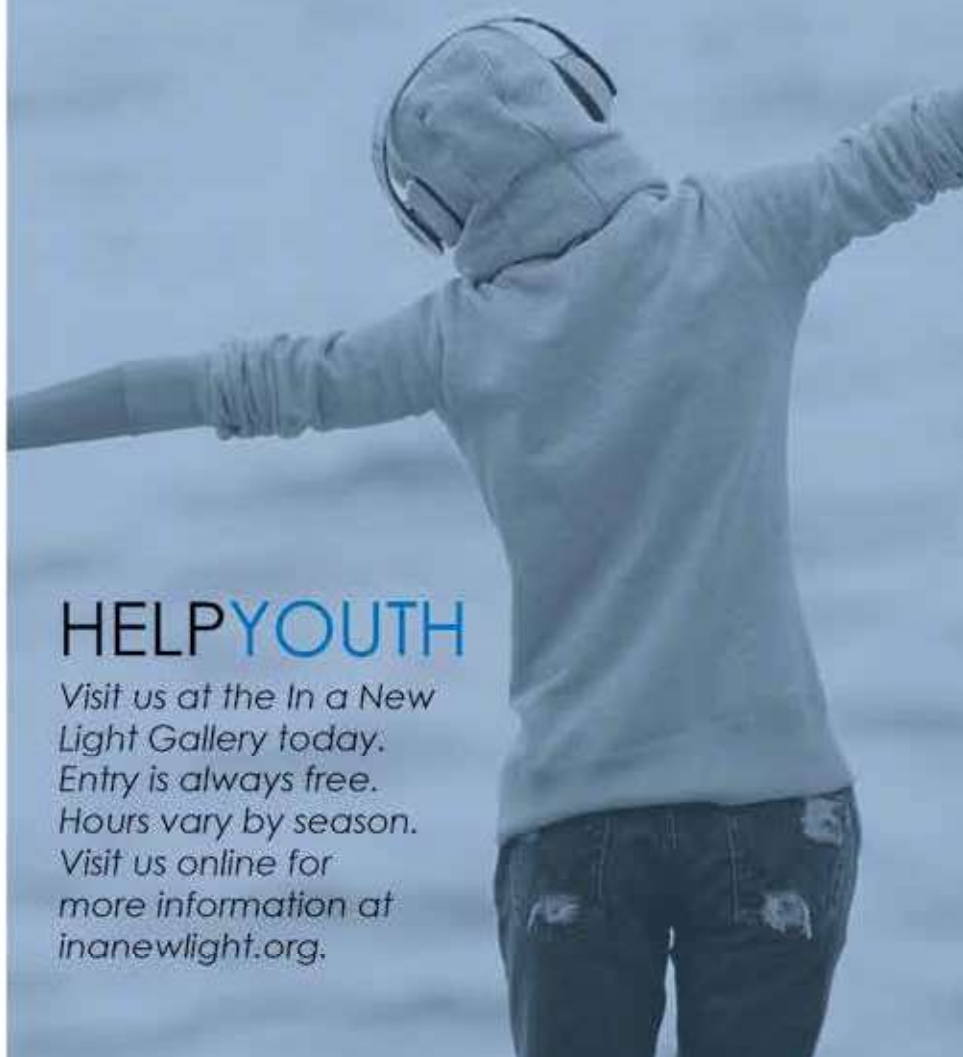
In a **New Light**
gallery

Connect with Hope

7417 North Bass Lake Rd
One mile south of Webster on
State Highway 35

inanewlight.org | nwpltd.org
@NWP_ltd | 715.327.4402

hours vary by season



HELP **YOUTH**

Visit us at the In a New
Light Gallery today.
Entry is always free.
Hours vary by season.
Visit us online for
more information at
inanewlight.org.



Same-day appointments

7 days a week

Monday - Friday, 10 a.m. to 7 p.m.

Saturday - Sunday, 9 a.m. to 1 p.m.



Amery Hospital & Clinic